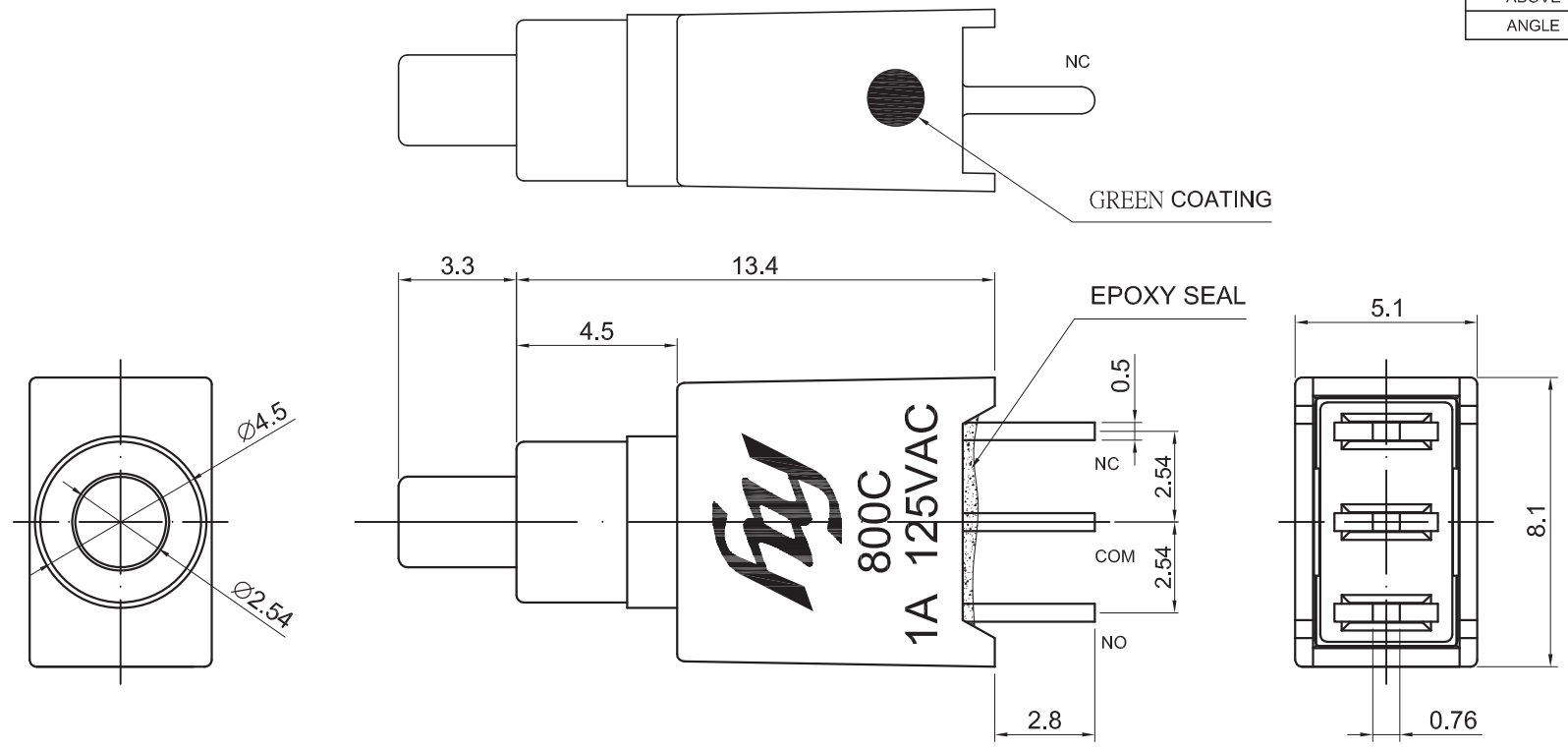
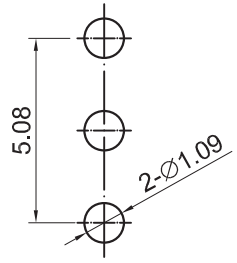


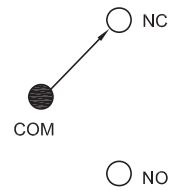
DIMENSION	TOLERANCE
BELOW 10 mm	± 0.3
10~100 mm	± 0.5
ABOVE 100 mm	± 0.8
ANGLE	± 3°



P.C. MOUNTING



SCHEMATIC



SPECIFICATIONS:

- 1.RATING: 1Amps with resistive load @ 125VAC or 28VDC
- 2.CONTACT RESISTANCE: 20M $\Omega$  max , 1.5 V DC ; 100mA.
- 3.INSULATION RESISTANCE:1,000M $\Omega$  min , 500V DC.
- 4.DIELECTRIC STRENGTH: 1500V AC for 1 Minute.
- 5.OPERATING LIFE:30,000 cycles.
- 6.OPERATING TEMPERATURE: -30°C ~85°C.
- 7.OPERATING FORCE : 250±100 gf.

△					DATE	2013/01/25	UNIT	mm	MODE	PUSH BUTTON SWITCH
△					APPROVAL	KAVEN	SCALE	1 : 1	PART	PS008-N12AB-HY
△					CONFIRM	TEREANCE	VIEW	⊕ ⊖	2D FILE NAME	PS008-N12AB-HY
	DATE	APPROVAL	DESIGN	ENGINEERING CHANGE DESCRIPTION	DESIGN	ZHJ	VER.	01	3D FILE NAME	

**Hy** 淮洋有限公司  
 HUAI YANG CO.,LTD.  
 www.hy1688.com.tw