



## Navigation Switches Series **SPD5K**

時尚導航，完美呈現。  
Navigate with style, Perfectly poised.



### Feature

- Easily connected by socket connector.
- Durable, vivid LED illumination.
- Choice of colored caps.
- Choice of painted colored caps.
- Laser marking service.
- Available with small quantity order.

### Application

Public building · Home Security ·  
Business building ·  
Industrial equipment...etc.

### 特色

連接器連接，免焊接方便使用  
LED照光，耐久鮮明  
提供多種顏色蓋子選擇  
噴漆色蓋選擇  
鐳射雕刻服務  
可少量訂購

### 使用範圍

公共空間、居家、商用建築、機械設備



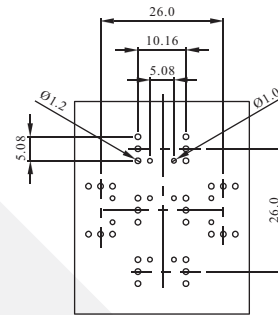
# Navigation Switches Series **SPD5K**



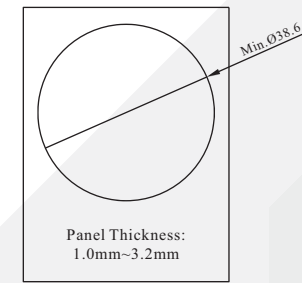
**General Specifications**  
 Circuit : SPST  
 Current Rating : 50mA @ 12VDC  
 Contact Resistance : 100mOhm Max. (initial)  
 Insulation Resistance : 100MOhm Min.  
 Operating Force : 300gf±50gf  
 Total Travel : 0.3mm±0.1mm  
 Operating Life : 1,000,000 cycles Min.  
 Operating Temperature : -10 deg.~+60 deg.  
 Solder Specifications : 260 deg. for 3 seconds

**Materials**  
 Cover : Polycarbonate (PC)  
 Reflector : Polyamide (PA)  
 Base : LCP  
 Action Dome : Stainless steel with silver plating  
 Terminal : Phosphor bronze (PBS) with gold plating

## PCB layout & Panel cutting

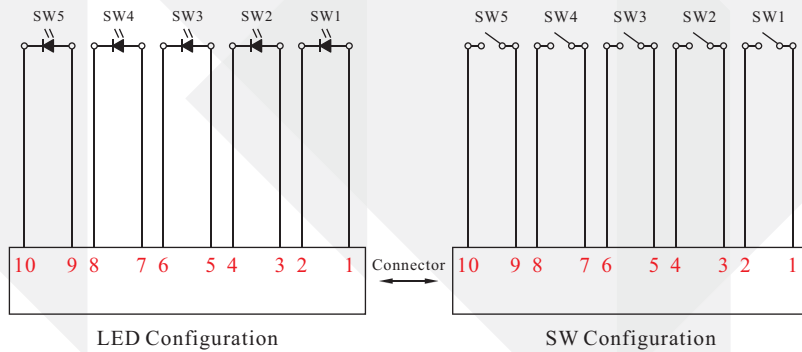


PCB layout TH

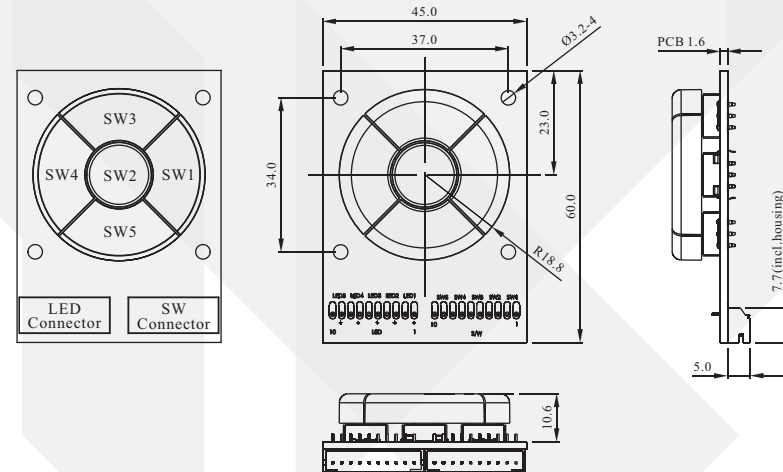


Panel cutting

## Contact configuration



## Dimension





# Navigation Switches Series **SPD5K**

## How to Order



We provide Laser Marking service.

CAP Style		
Module Type	SW2	SW1,3,4,5
A	YCA017	YCA018

Switch LED Color					
SW1	SW2	SW3	SW4	SW5	
		0			without LED
		1			Red
		2			Yellow
		3			Green
		4			White
		7			Blue
		P			Pure Green

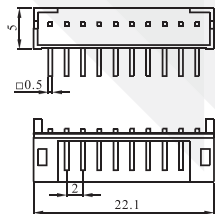
LED use Snow color cap only.

CAP/Color					
SW1	SW2	SW3	SW4	SW5	
		1			Red
		2			Yellow
		3			Green
		4			White
		5			Black
		6			Orange
		7			Blue
		9			Grey
		B			Snow

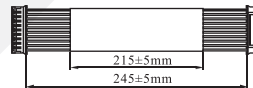
## Accessory



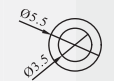
Connector: YCN001



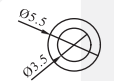
Cable: YCW001



Spacer Support : YPA008



Spacer Support : YPA009





## SPD5K Standard Module

<p>Module</p>							
<p>Part No</p>	<p>SPD5K-AM003</p>	<p>SPD5K-AM004</p>	<p>SPD5K-AM005</p>	<p>SPD5K-AM006</p>	<p>SPD5K-AM007</p>	<p>SPD5K-AM008</p>	<p>SPD5K-AM009</p>
<p>Description</p>	<p>Black Cap with white print Without LED</p>	<p>Cap Painted White with Laser Marking Pure Green LED</p>	<p>Cap Painted Green with Laser Marking Red LED</p>	<p>Cap Painted Black with Laser Marking Red LED</p>	<p>Cap Painted Silver with Laser Marking Blue LED</p>	<p>Cap Painted Blue with Laser Marking Yellow LED</p>	<p>Cap Painted Red with Laser Marking Blue LED</p>