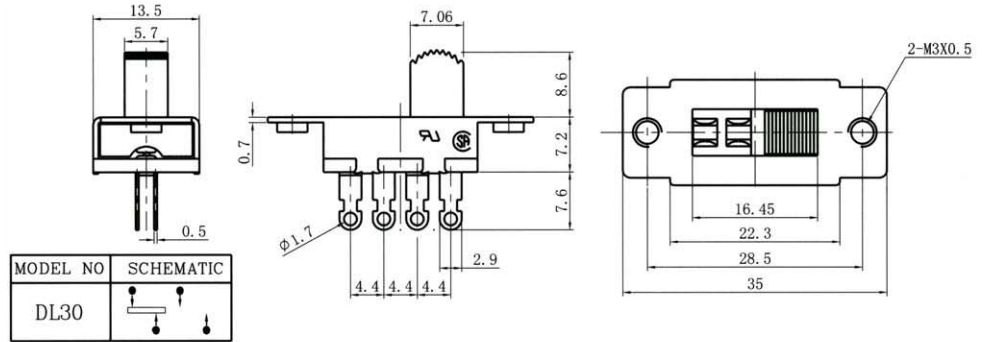
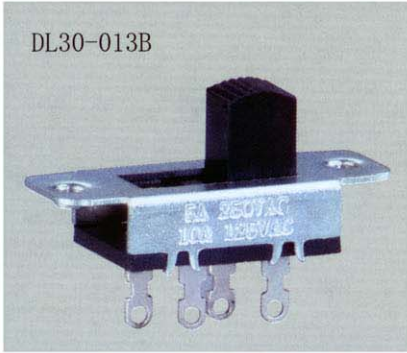


DL30

SERIES SWITCHES



SPECIFICATION

Contact Rating :10A 125VAC 5A250VAC ()
 Contact Resistance :30 milliohms max.
 Insulation Resistance :500 Megohms min. 500VDC

Withstand Voltage :1,000 VAC-1 minute
 Endurance :10,000 Cycles
 Operating Force :400±200gf

