

## LOW-Profile Rotary Switch

## SPECIFICATION

### △MECHANICAL

Mechanical Life: 200mΩ max. 10,000 cycles

Operating Force: N=130±50gf

B=40±30gf

### △ENVIRONMENTAL

Operation Temperature: -20℃ to +80℃

Storage Temperature: -40℃ to +85℃

### △ELECTRICAL

Electrical Life: 200mΩ max. 10,000 cycles

Switching Rating: 25mA, 24VDC

Contact Resistance: (a)70mΩ max. (Initial)

(b)200mΩ max. (final)

Insulation Resistance: 100MΩ min. at 500VDC

Voltage Proof: 300VAC for 1 minute

## MATERIAL

△COVER: Nickel silver

△BASE / STEM: UL94V-0 Nylon High-Temp Thermoplastic

Color: Black

△CONTACT : Alloy Copper

△SPRING PLATE: Stainless Steel

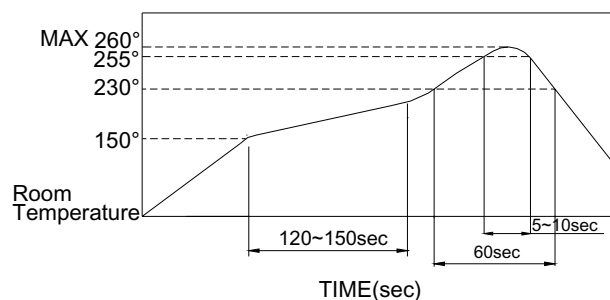
△TERMINAL: Brass with silver plated.

## SOLDERING PROCESS

△HAND SOLDERING : Use a sold iron of 30 watts, controlled at 350℃ approximately 5 seconds while applying.

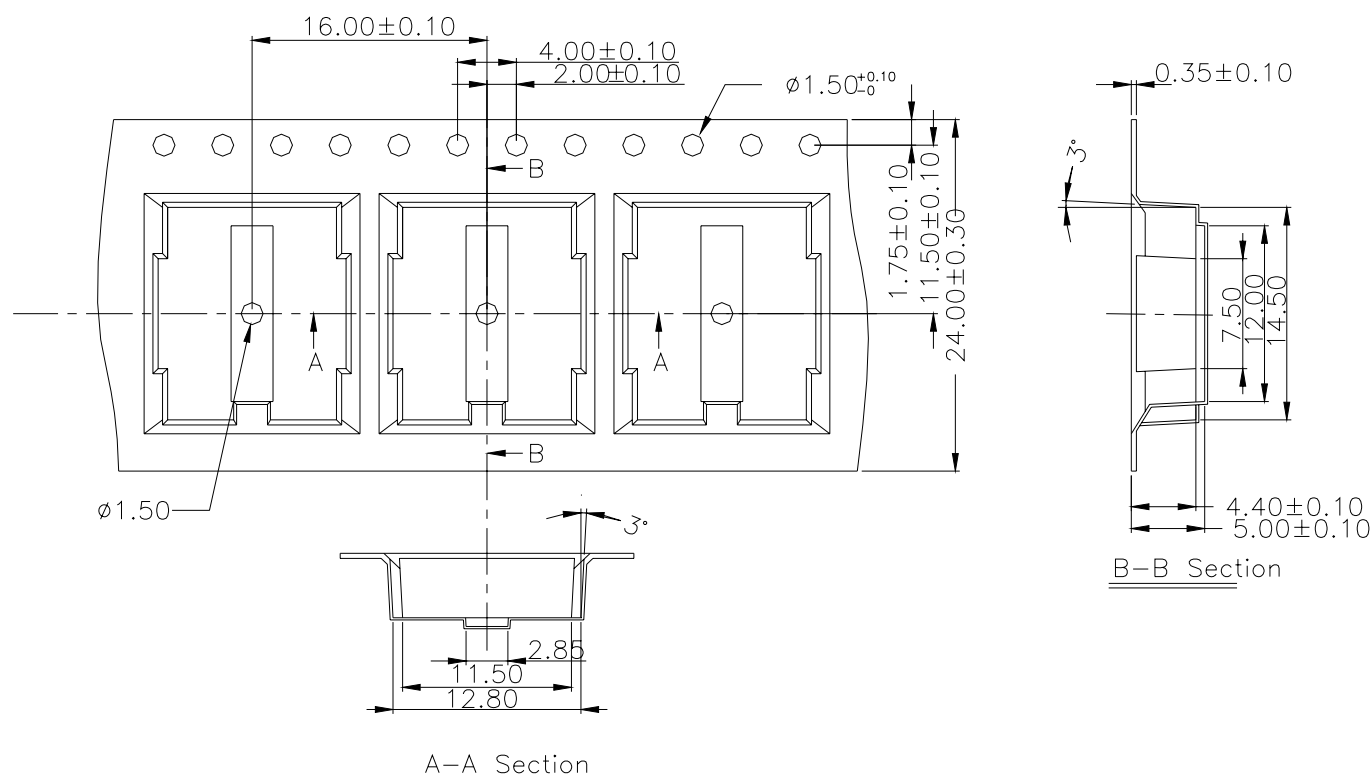
△REFLOW SOLDERING: When applying reflow soldering, the peak temperature or the reflow over should be set at 260℃ max.

△Reflow Temperature Profile:



## PACKING

Tape and Reel: 900 pcs/reel



General Tolerance : ±0.1mm