



淮 洋 有 限 公 司 HUI YANG CO., LTD.

TEL : 886-2-8261-8986 FAX : 886-2-8261-1885

www.hy1688.com.tw 236新北市土城區中央路二段191號10樓之5

Series 300A

Sealed Miniature Rocker & Paddle Switches

SPECIFICATIONS:

CONTACT RATING: Refer to "Contact Material Options" for more info.

ELECTRICAL LIFE: 50,000 make-and-break cycles at full load.

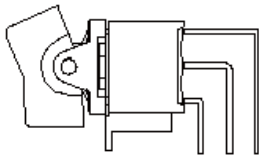
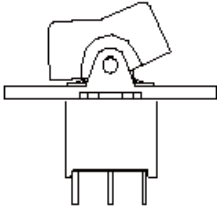
CONTACT RESISTANCE: 10mΩ max. initial @2-4VDC.

100mA, for both silver and gold plated contacts.

INSULATION RESISTANCE: 1,000MΩ min.

DIELECTRIC STRENGTH: 1500V RMS @ sea level.

OPERATING TEMPERATURE: -30°C to 85°C.



MATERIALS:

CASE & BUSHING: Glass filled nylon 6/6, flame retardant, heat stabilized (UL 94V-0).

ACTUATOR: Nylon, black std, internal o-ring sealed (300A).

ACTUATOR: Nylon, black std (300C).

PANEL REAR MOUNT: Nylon 6/6 (UL 94V-0), black std.

SWITCH SUPPORT: Brass, tin plated.

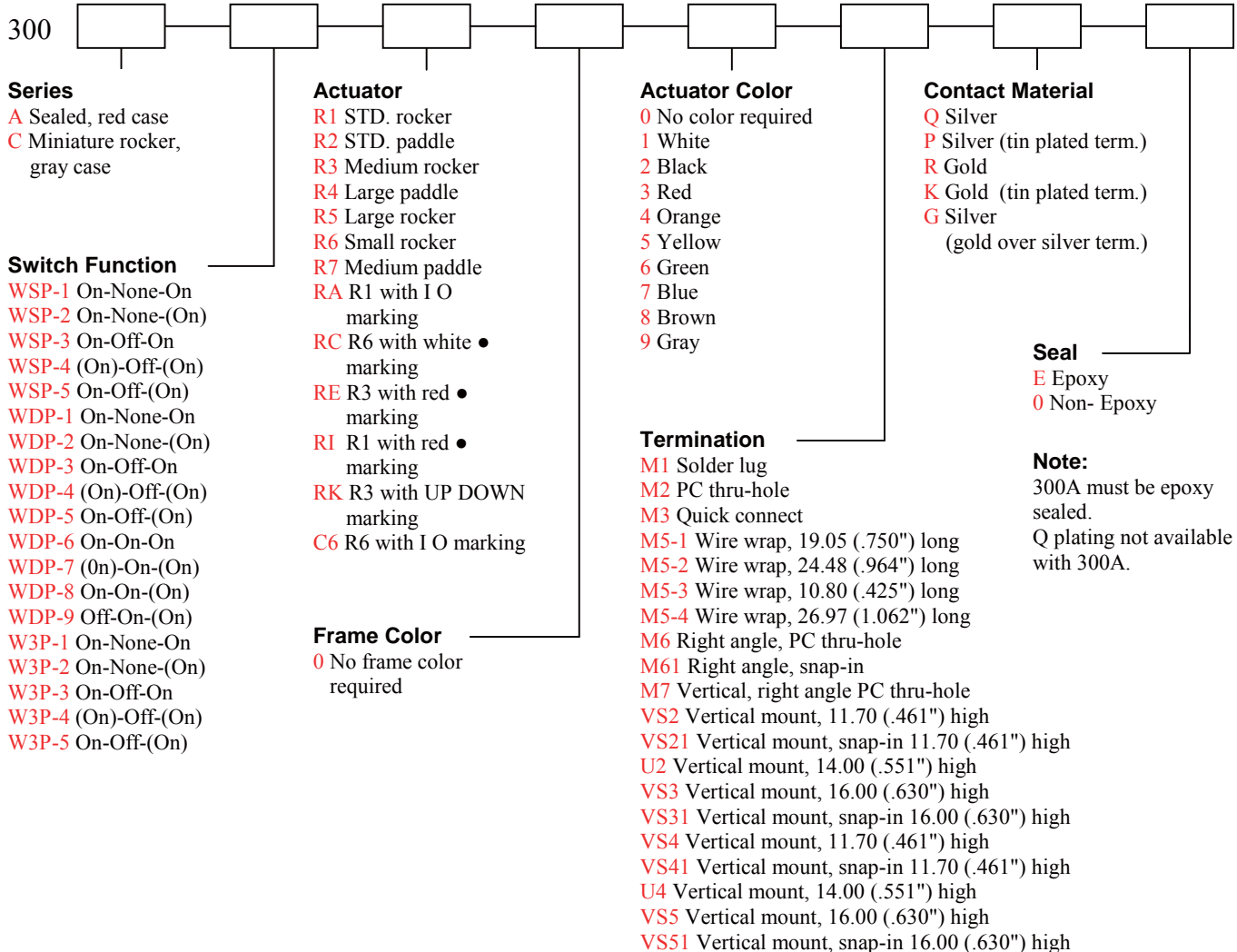
ACTUATOR PIVOT & MOUNTING BRACKET: Nylon (UL 94V-0).

ACTUATOR PIVOT RETAINER: Stainless steel.

TERMINAL SEAL: Epoxy.

If your preferred product configuration is not shown, please contact our sales representative for custom design.

HOW TO ORDER SYSTEM



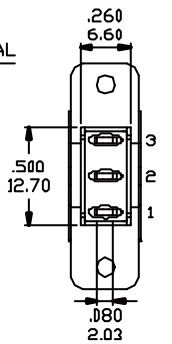
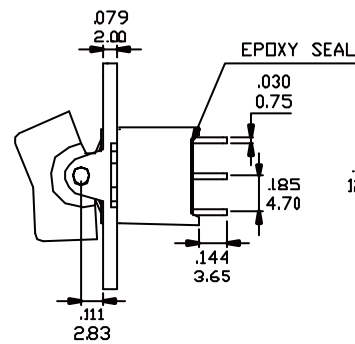
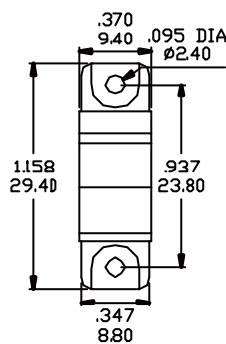
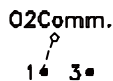
Series 300A

Sealed Miniature Rocker & Paddle Switches

SPDT

Model No.	Switching Position		
WSP-1	ON	NONE	ON
WSP-2	ON	NONE	(ON)
WSP-3	ON	OFF	ON
WSP-4	(ON)	OFF	(ON)
WSP-5	ON	OFF	(ON)
Term. Comm.	2-3	OPEN	2-1

Schematic

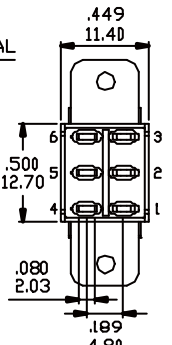
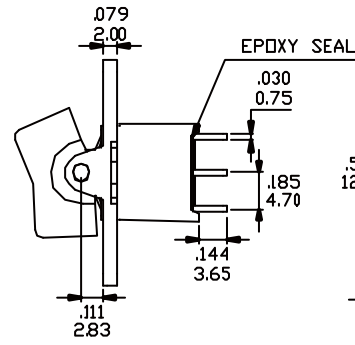
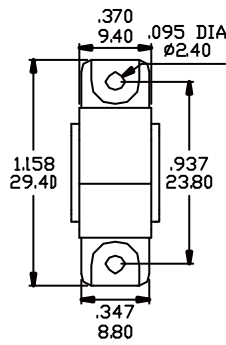
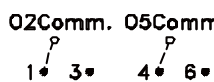


DPDT

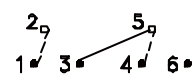
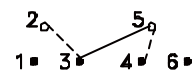
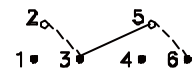
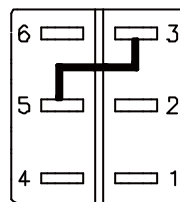
Model No.	Switching Position		
WDP-1	ON	NONE	ON
WDP-2	ON	NONE	(ON)
WDP-3	ON	OFF	ON
WDP-4	(ON)	OFF	(ON)
WDP-5	ON	OFF	(ON)
Term. Comm.	2-3,5-6	OPEN	2-1,5-4

Model No.	Switching Position		
WDP-6	ON	ON	ON
WDP-7	(ON)	ON	(ON)
WDP-8	ON	ON	(ON)
WDP-9	OFF	ON	(ON)
Term. Comm.	2-3,5-6	2-3,5-4	2-1,5-4

Schematic



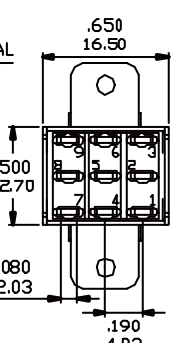
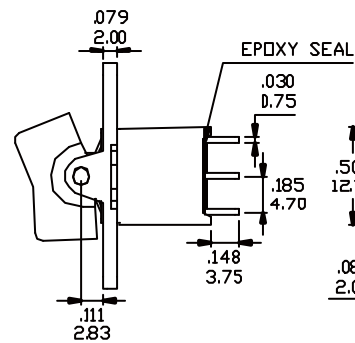
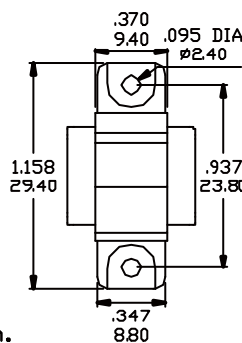
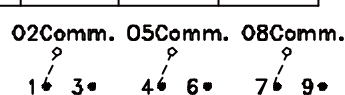
WIRING FOR ON-ON-ON (3-WAY) FUNCTION



3PDT

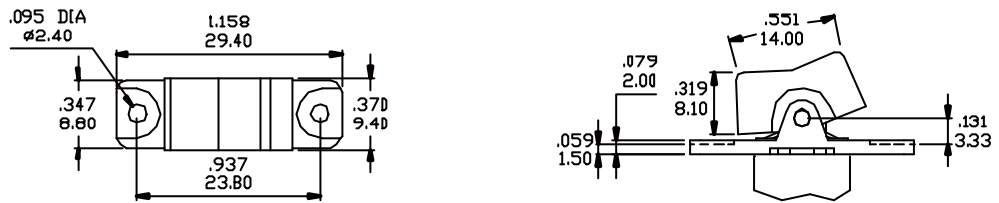
Model No.	Switching Position		
W3P-1	ON	NONE	ON
W3P-2	ON	NONE	(ON)
W3P-3	ON	OFF	ON
W3P-4	(ON)	OFF	(ON)
W3P-5	ON	OFF	(ON)
Term. Comm.	2-3,5-6	OPEN	2-1,5-4

Schematic

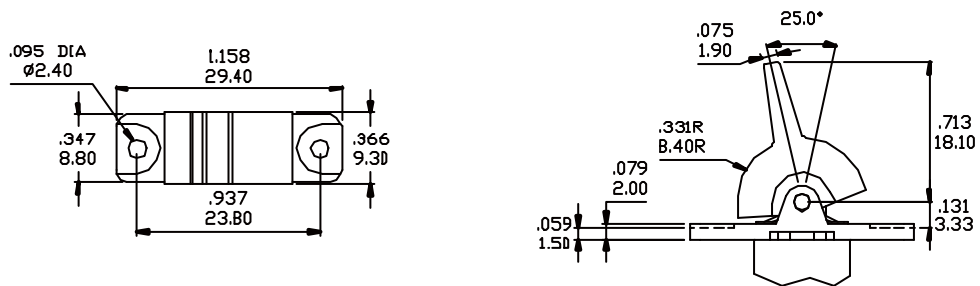


ACTUATOR OPTIONS FOR PANEL REAR MOUNT

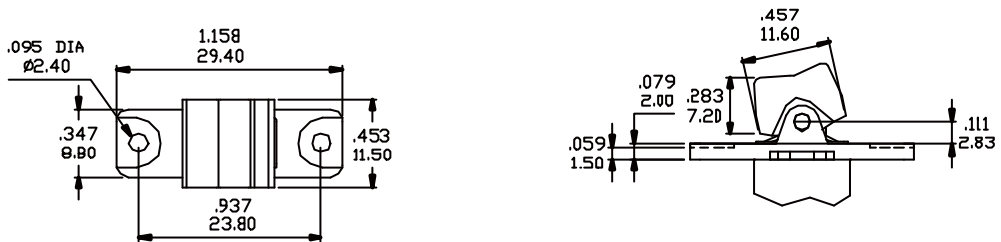
R1



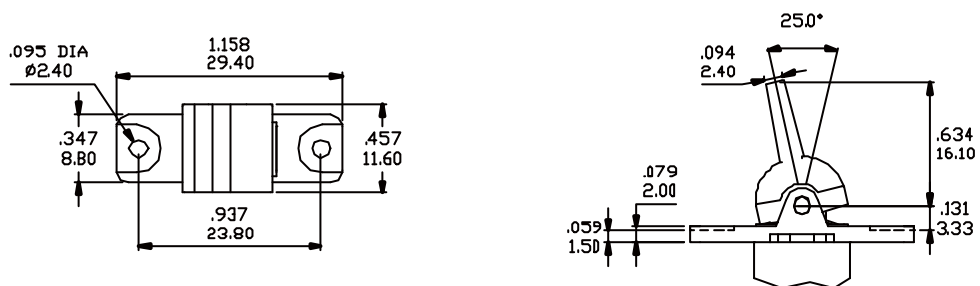
R2



R6

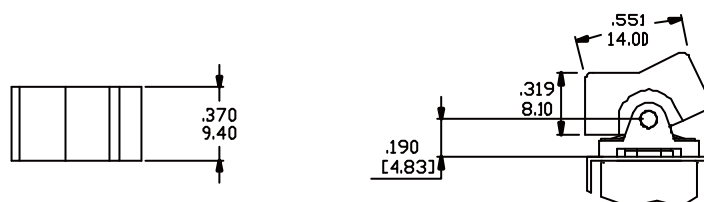


R7



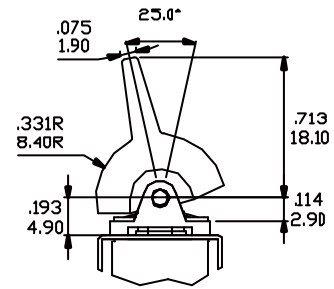
ACTUATOR OPTIONS FOR P.C MOUNT

R1

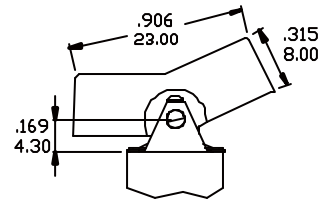
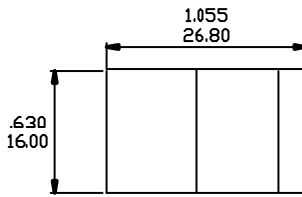


ACTUATOR OPTIONS FOR P.C MOUNT

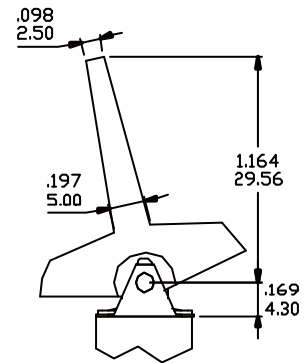
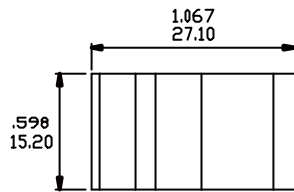
R2



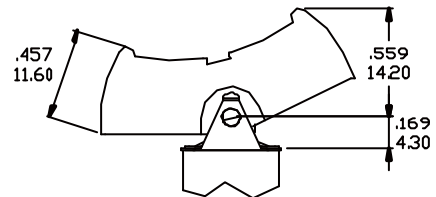
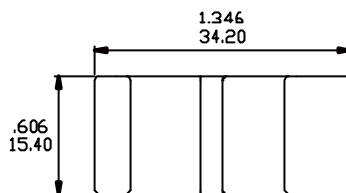
R3



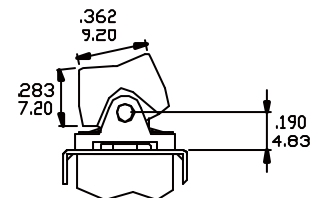
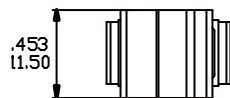
R4



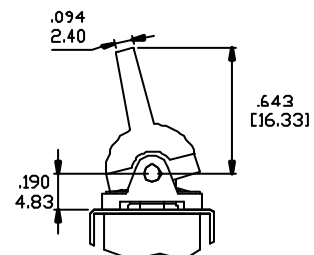
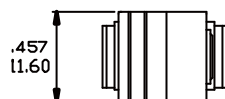
R5



R6

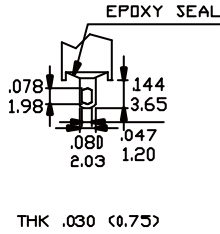


R7

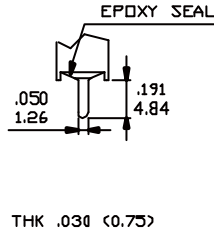


TERMINATION OPTIONS

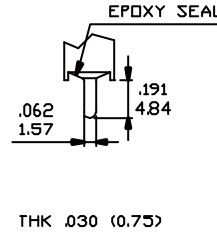
M1 STD. SOLDER LUG



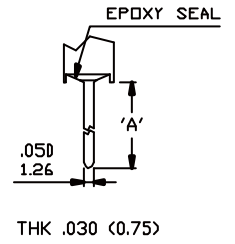
M2 PC THRU-HOLE



M3 QUICK CONNECT

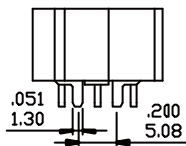


M5 WIRE WRAP

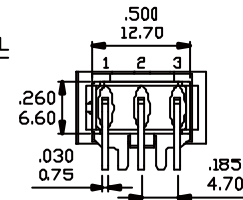
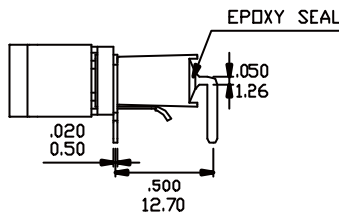


OPTION CODE	DIM. 'A'
M5-1	.750(19.05)
M5-2	.964(24.48)
M5-3	.425(10.80)
M5-4	1.062(26.97)

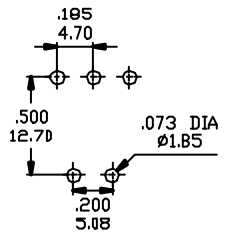
M6



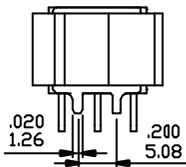
SPDT



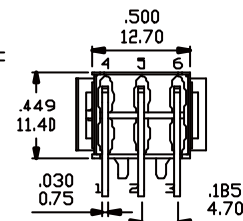
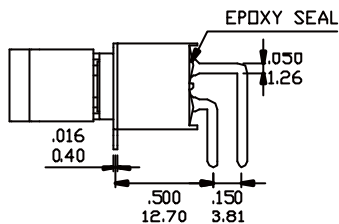
P.C. MOUNTING



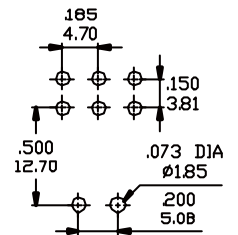
M6



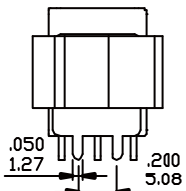
DPDT



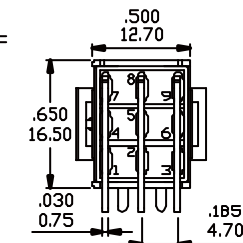
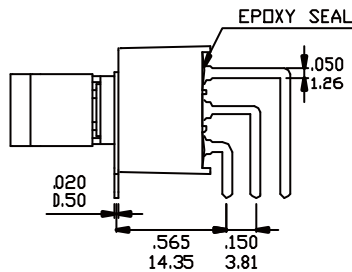
P.C. MOUNTING



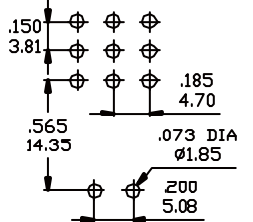
M6



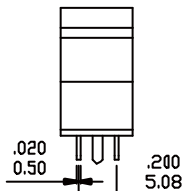
3PDT



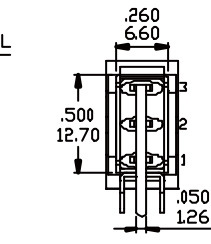
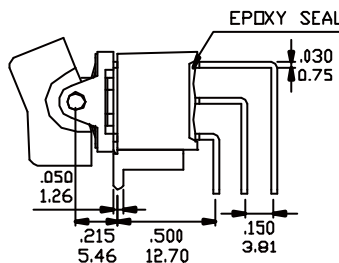
P.C. MOUNTING



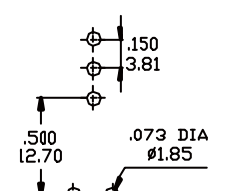
M7



SPDT



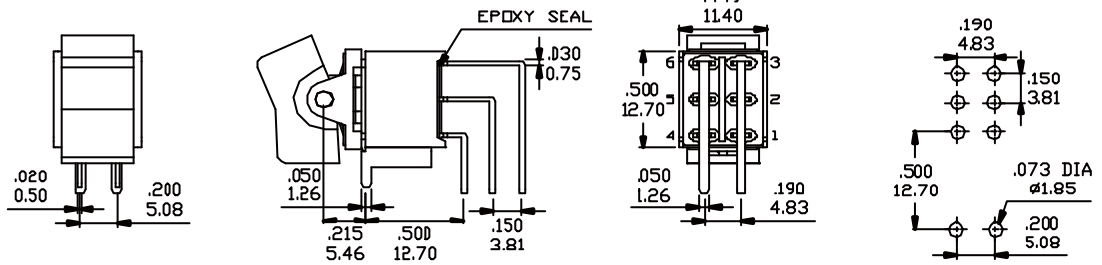
P.C. MOUNTING



TERMINATION OPTIONS

M7

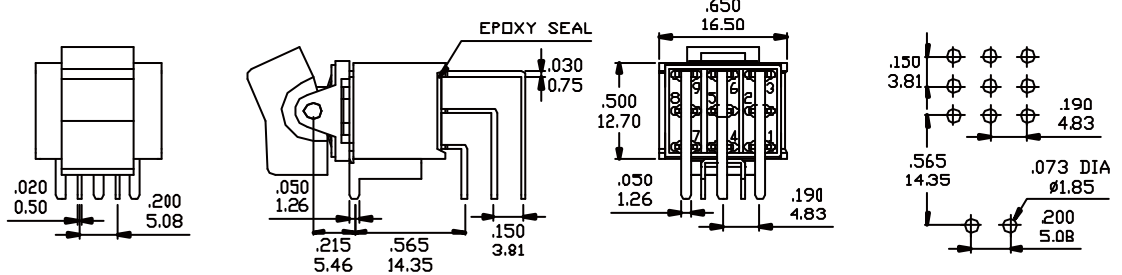
P.C.MOUNTING



DPDT

M7

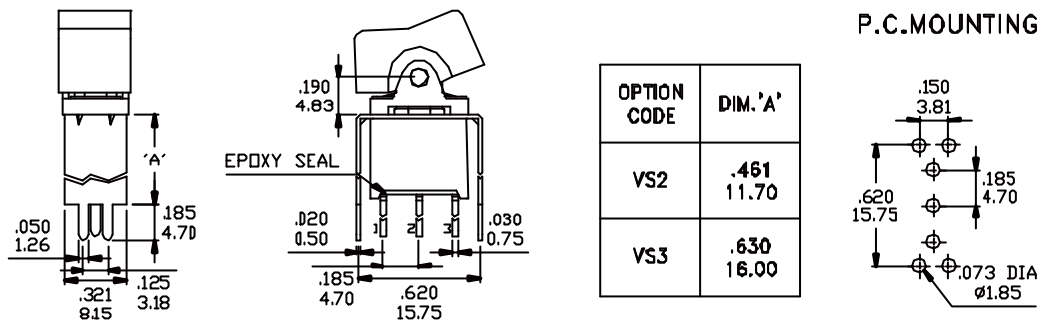
P.C.MOUNTING



3PDT

VS2-VS3

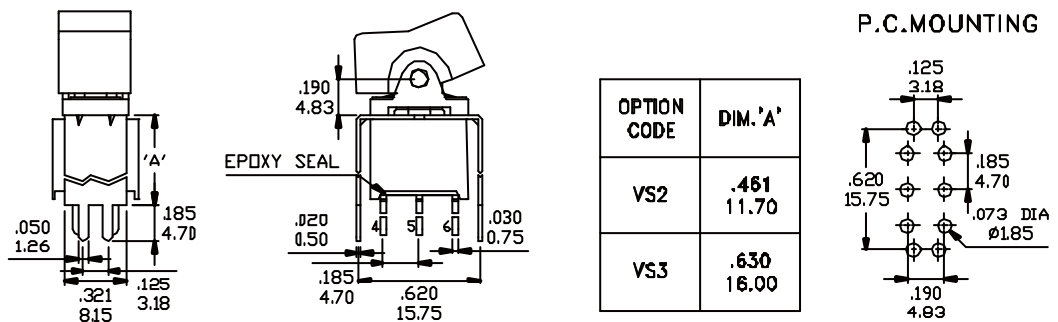
P.C.MOUNTING



SPDT

VS2-VS3

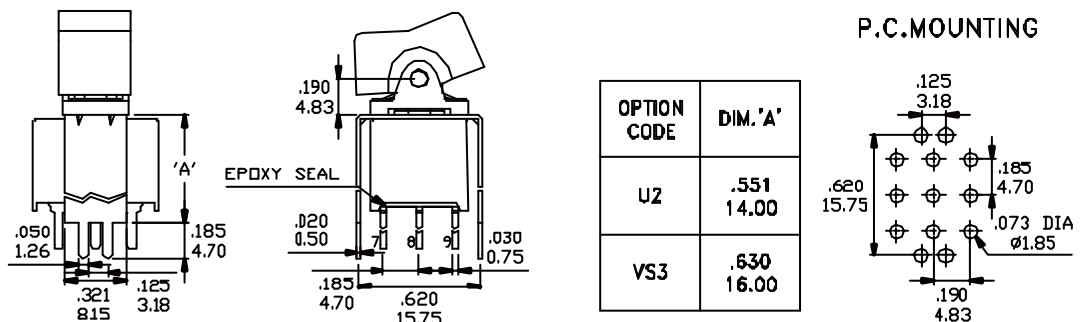
P.C.MOUNTING



DPDT

U2-VS3

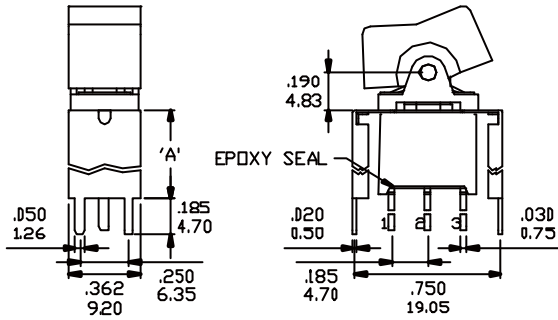
P.C.MOUNTING



3PDT

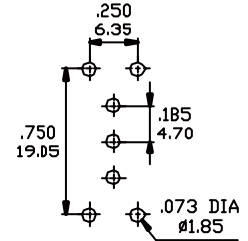
TERMINATION OPTIONS

VS4-VS5



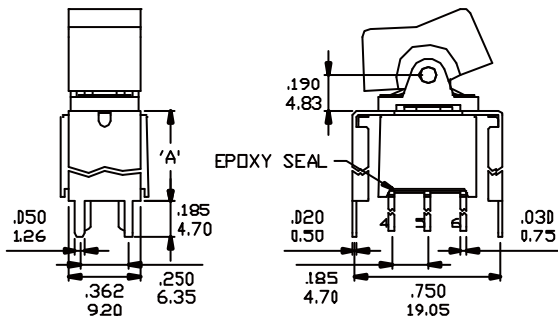
OPTION CODE	DIM. 'A'
VS4	.461 11.70
VS5	.630 16.00

P.C.MOUNTING



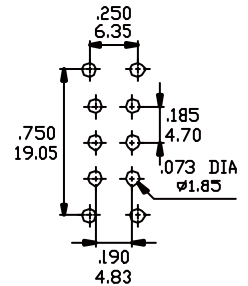
SPDT

VS4-VS5



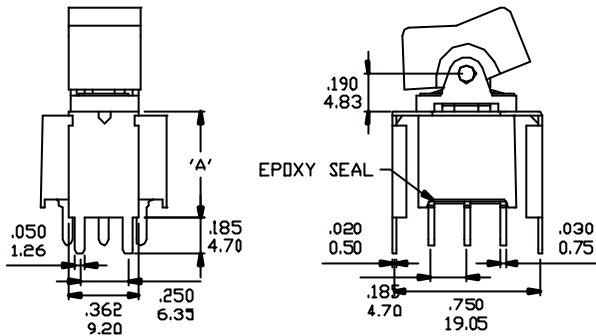
OPTION CODE	DIM. 'A'
VS4	.461 11.70
VS5	.630 16.00

P.C.MOUNTING



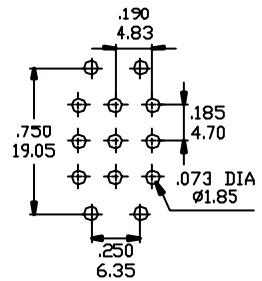
DPDT

U4-VS5



OPTION CODE	DIM. 'A'
U4	.551 14.00
VS5	.630 16.00

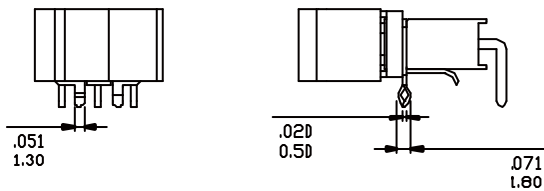
P.C.MOUNTING



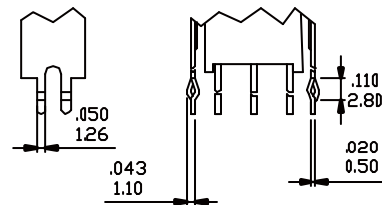
3PDT

SNAP-IN TERMINATION OPTIONS

M61



VS21, VS31




VS41, VS51



* PC Mounting for M61, M71, VS21, VS31, VS41, VS51 refer to M6, M7, VS2, VS3, VS4, VS5 respectively.

CONTACT MATERIAL OPTIONS

Coding	Contact Material	Terminal Plating	Rating	Agency Approvals
G	Silver ¹	Gold over silver ³	5Amps @ 125VAC or 28VDC 2Amps @ 250VAC	
P		Tin plated ⁵		
R	Gold ²	Gold plated ⁴	0.4VA max @ 20V max (AC or DC)	IP67
K		Tin plated ⁵		

* Standard G plating for sealed product.

1. Movable Contact: Copper alloy, silver plated.
2. Movable Contact: Copper alloy with gold plated over nickel plated.
3. Terminals: Silver plated with outer layer in gold plating.
4. Terminals: Copper alloy, with gold plated over nickel plated.
5. Outer Terminals: Copper alloy with tin over nickel plated.
6. Terminal Contact: Gold plated over nickel plated.
7. Terminal Contact: Palladium nickel alloy plated.

* P, K not available with M1 and M3 terminals.

* 6Amps (Movable Contact: coin silver, silver plated) available to model ON-NONE-ON and no agency approval when ordered.

* IP67 protection for 300A series only.