



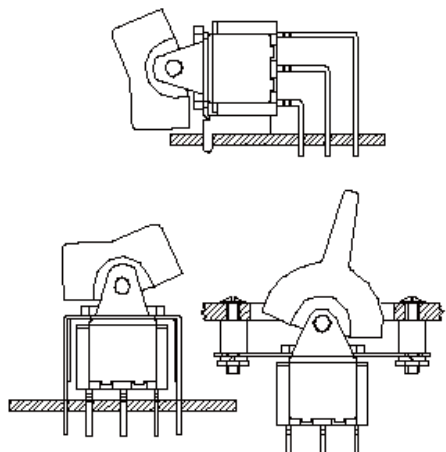
淮洋有限公司 HUI YANG CO., LTD.

TEL : 886-2-8261-8986 FAX : 886-2-8261-1885

www.hy1688.com.tw 236新北市土城區中央路二段191號10樓之5

Series 300

Miniature Rocker & Paddle Switches



SPECIFICATIONS:

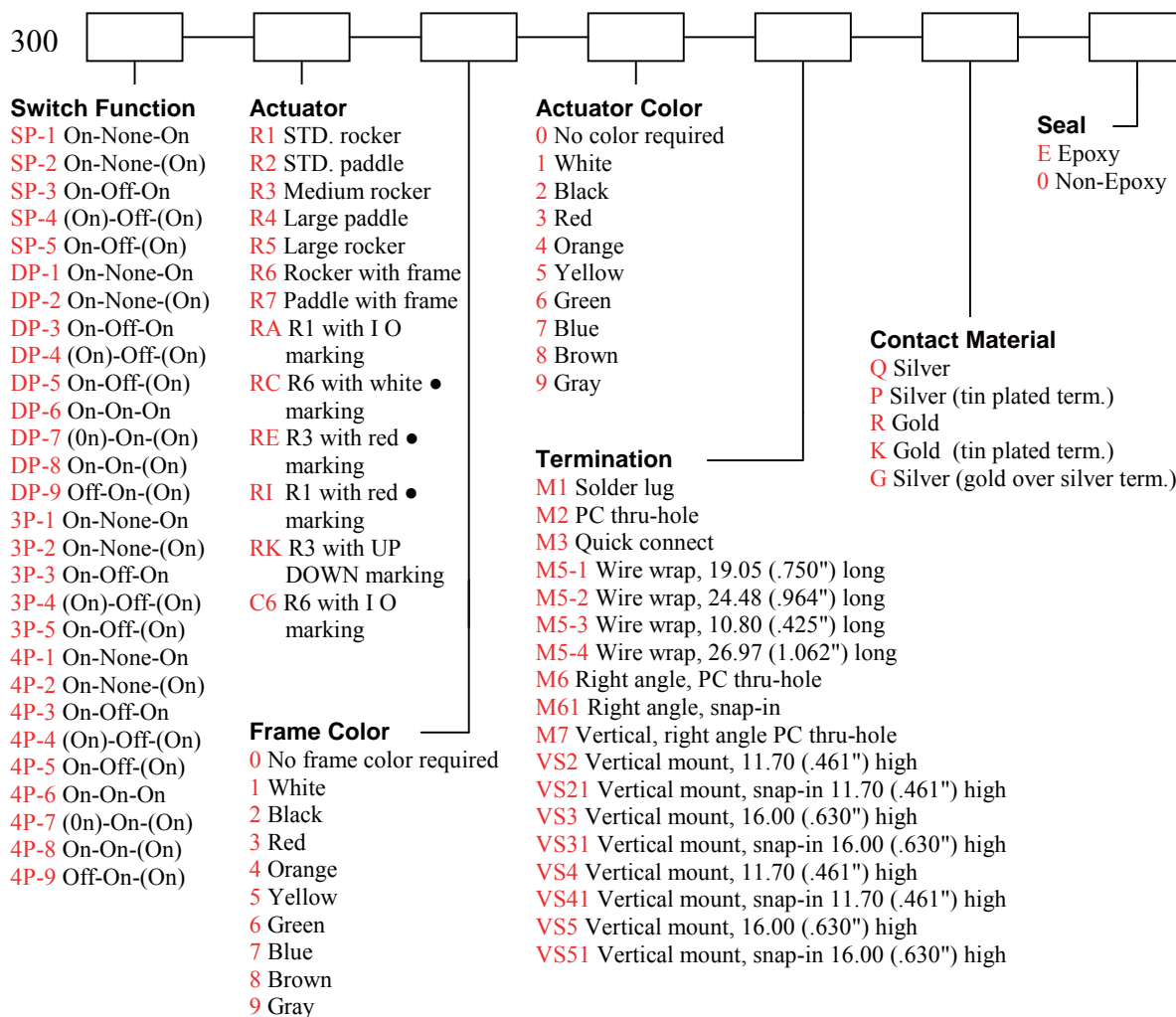
CONTACT RATING: Refer to "Contact Material Options" for more info.
 ELECTRICAL LIFE: 50,000 make-and-break cycles at full load.
 CONTACT RESISTANCE: 10mΩ max. Initial @ 2-4VDC.
 100mA for both silver and gold plated contacts.
 INSULATION RESISTANCE: 1,000MΩ min.
 DIELECTRIC STRENGTHS: 1,500V RMS @ sea level.
 OPERATING TEMPERATURE: -30°C to 85°C.

MATERIALS:

CASE: Diallyl phthalate (DAP) (UL 94V-0).
 ROCKERS: Nylon (UL 94V-0).
 BUSHING: Brass, nickel plated.
 HOUSING: Stainless steel.
 FRONT/REAR MOUNTING: Stainless steel.
 SWITCH SUPPORT: Brass, tin plated.
 TERMINAL SEAL: Epoxy.

If your preferred product configuration is not shown, please contact our sales representative for custom design.

HOW TO ORDER SYSTEM

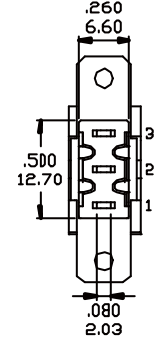
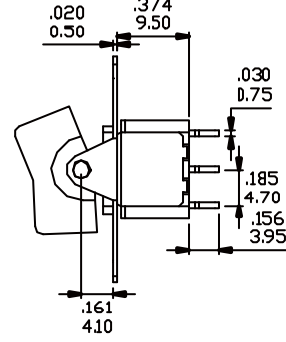
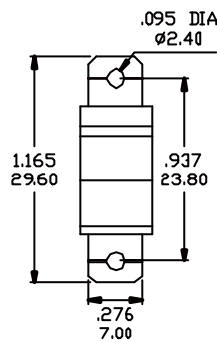
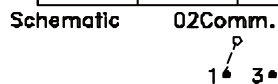


Series 300

Miniature Rocker & Paddle Switches

SPDT

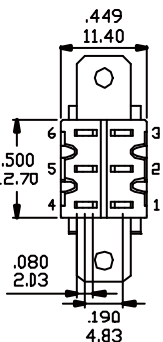
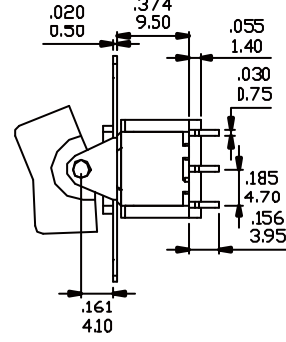
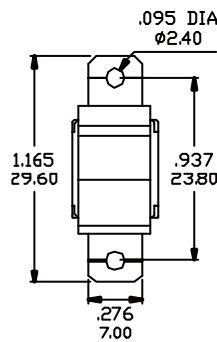
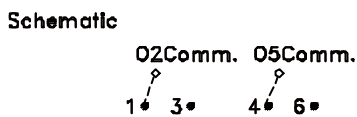
Model No.	Switching Position		
SP-1	ON	NONE	ON
SP-2	ON	NONE	(ON)
SP-3	ON	OFF	ON
SP-4	(ON)	OFF	(ON)
SP-5	ON	OFF	(ON)
Term. Comm.	2-3	OPPEN	2-1



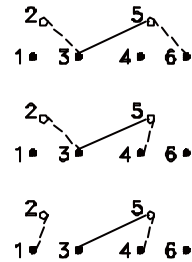
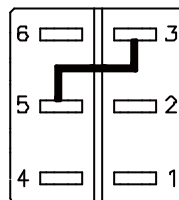
DPDT

Model No.	Switching Position		
DP-1	ON	NONE	ON
DP-2	ON	NONE	(ON)
DP-3	ON	OFF	ON
DP-4	(ON)	OFF	(ON)
DP-5	ON	OFF	(ON)
Term. Comm.	2-3,5-6	OPPEN	2-1,5-4

Model No.	Switching Position		
DP-6	ON	ON	ON
DP-7	(ON)	ON	(ON)
DP-8	ON	ON	(ON)
DP-9	OFF	OFF	(ON)
Term. Comm.	2-3,5-6	2-3,5-4	2-1,5-4

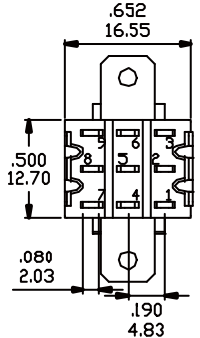
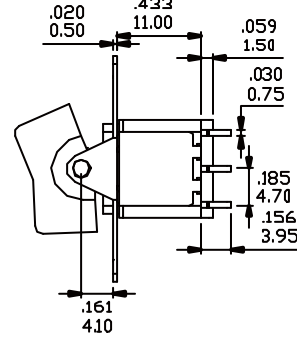
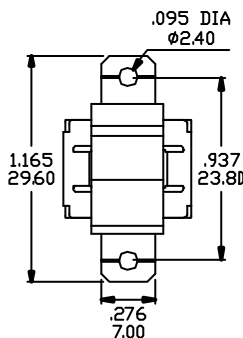
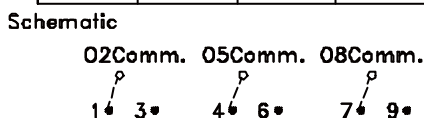


WIRING FOR ON-ON-ON (3-WAY) FUNCTION



3PDT

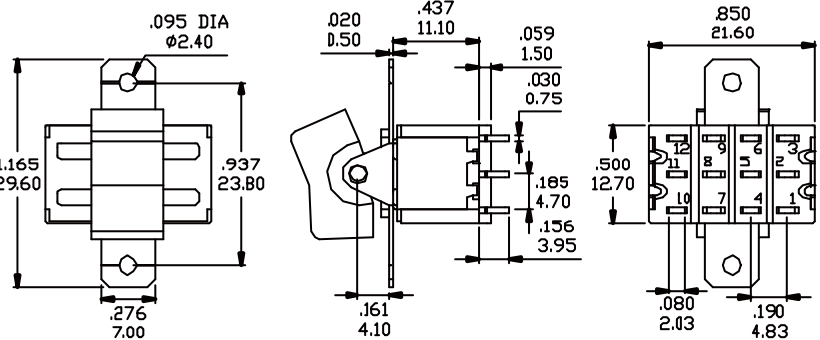
Model No.	Switching Position		
3P-1	ON	NONE	ON
3P-2	ON	NONE	(ON)
3P-3	ON	OFF	ON
3P-4	(ON)	OFF	(ON)
3P-5	ON	OFF	(ON)
Term. Comm.	2-3,5-6 8-9	OPPEN	2-1,5-4 8-7



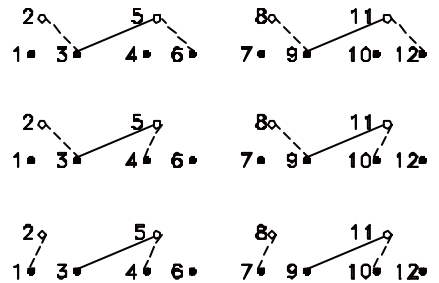
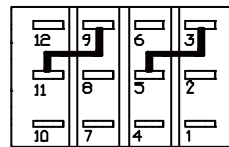
4PDT

Model No.	Switching Position		
4P-1	ON	NONE	ON
4P-2	ON	NONE	(ON)
4P-3	ON	OFF	ON
4P-4	(ON)	OFF	(ON)
4P-5	ON	OFF	(ON)
Term. Comm.	2-3,5-6 8-9, 11-12	OPEN	2-1,5-4 8-7, 11-10

Model No.	Switching Position		
4P-1	ON	NONE	ON
4P-2	ON	NONE	(ON)
4P-3	ON	OFF	ON
4P-4	(ON)	OFF	(ON)
4P-5	ON	OFF	(ON)
Term. Comm.	2-3,5-6 8-9, 11-12	2-3,5-4 8-9, 11-10	2-1,5-4 8-7, 11-10



WIRING FOR ON-ON-ON (3-WAY) FUNCTION



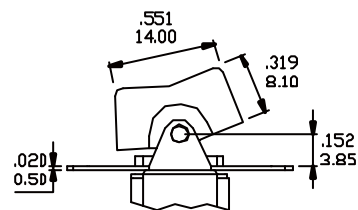
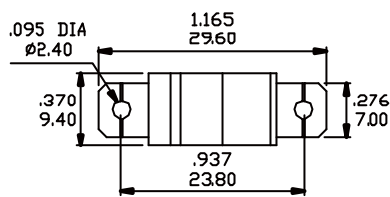
Schematic

O2Comm. O5Comm. O8Comm. O11Comm.

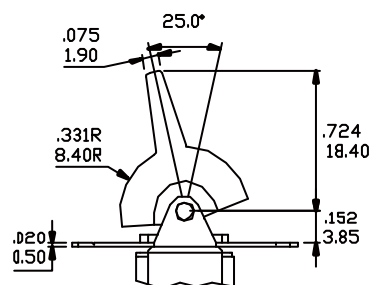
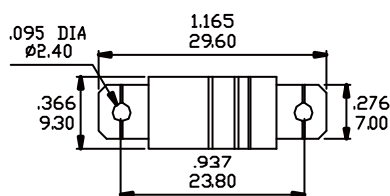


ACTUATOR OPTIONS FOR PANEL REAR MOUNT

R1



R2

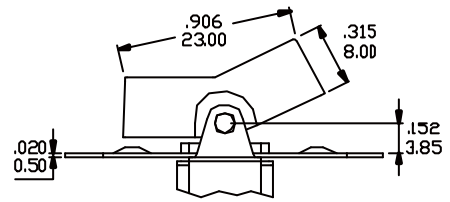
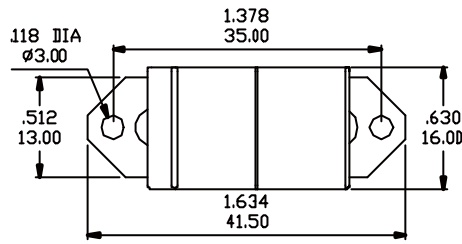


Series 300

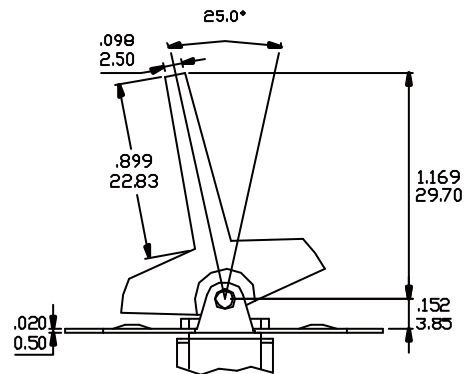
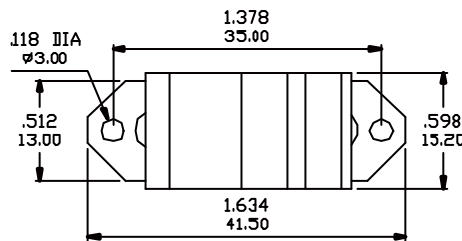
Miniature Rocker & Paddle Switches

ACTUATOR OPTIONS FOR PANEL REAR MOUNT

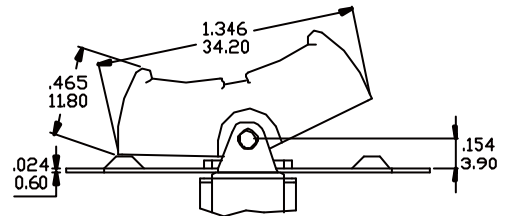
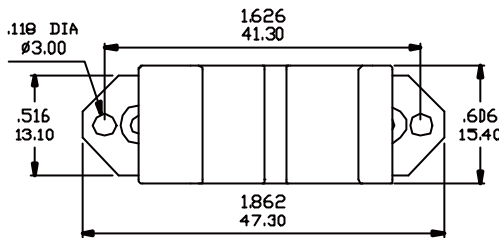
R3



R4

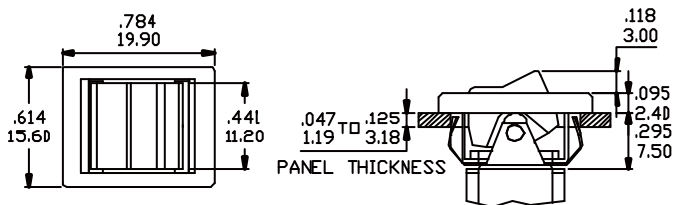


R5

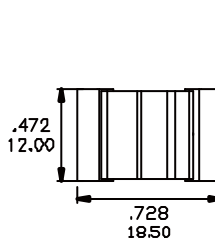


ACTUATOR OPTIONS FOR SNAP-IN FRONT MOUNT

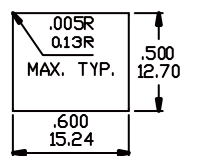
R6



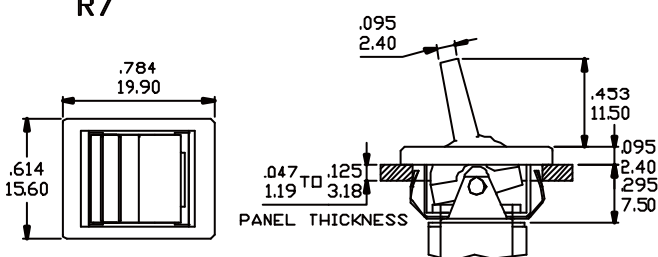
R6 WITHOUT FRAME



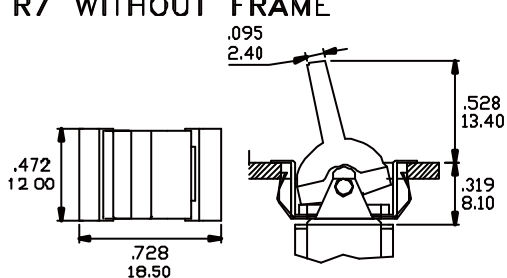
PANEL MOUNTING



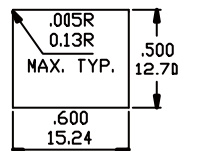
R7



R7 WITHOUT FRAME



PANEL MOUNTING

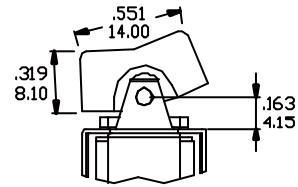
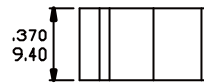


Series 300

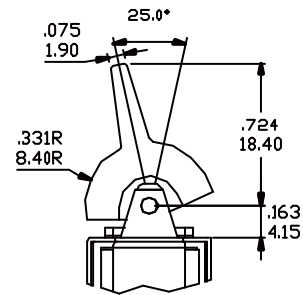
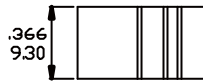
Miniature Rocker & Paddle Switches

ACTUATOR OPTIONS FOR P.C. MOUNT

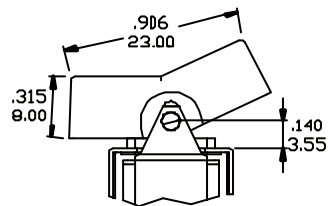
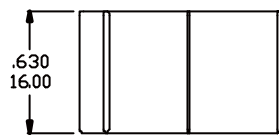
R1



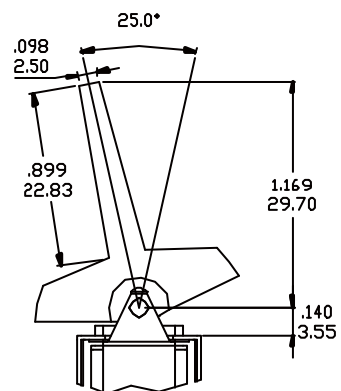
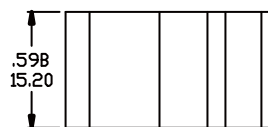
R2



R3



R4

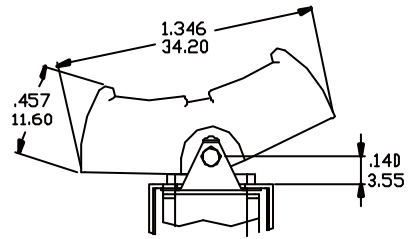
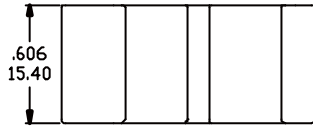


Series 300

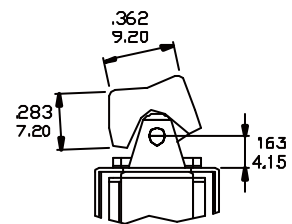
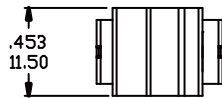
Miniature Rocker & Paddle Switches

ACTUATOR OPTIONS FOR P.C. MOUNT

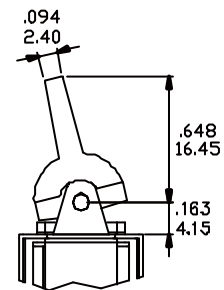
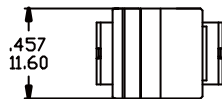
R5



R6

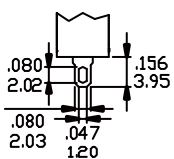


R7



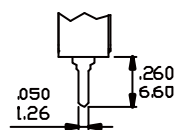
TERMINATION OPTIONS

M1 STD. SOLDER LUG



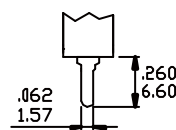
THK .030 (0.75)

M2 PC THRU-HOLE



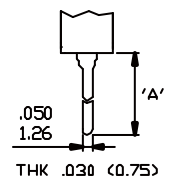
THK .030 (0.75)

M3 QUICK CONNECT



THK .030 (0.75)

M5 WIRE WRAP

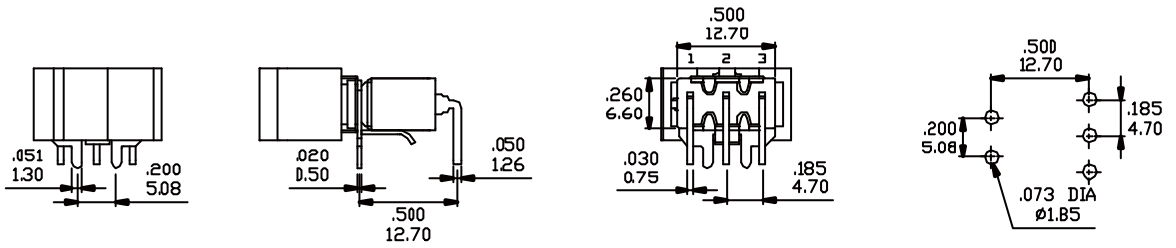


OPTION CODE	DIM. 'A'
M5-1	.750(19.05)
M5-2	.964(24.48)
M5-3	.425(10.80)
M5-4	1.062(26.97)

TERMINATION OPTIONS

M6

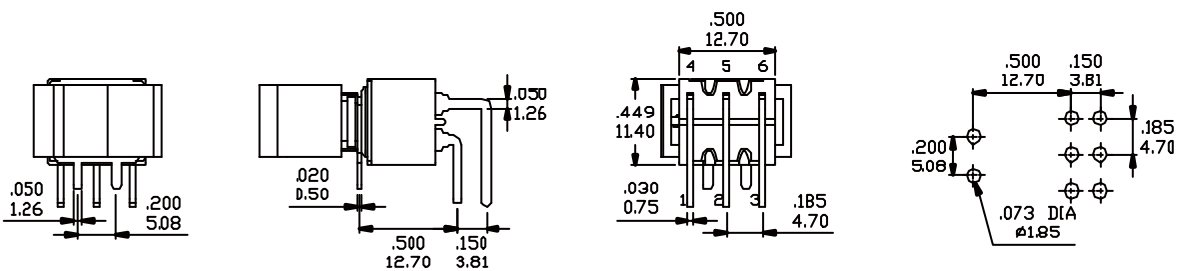
P.C.MOUNTING



SPDT

M6

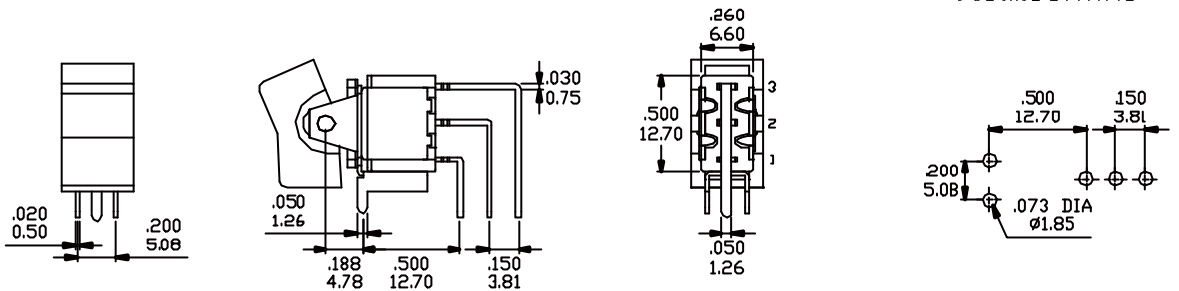
P.C.MOUNTING



DPDT

M7

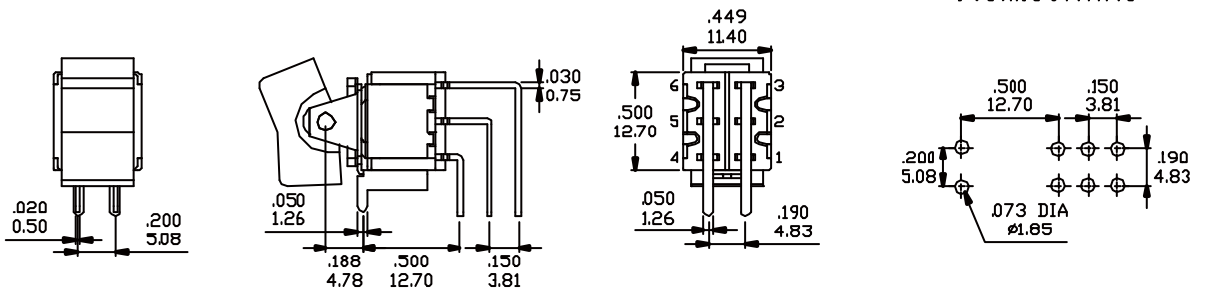
P.C.MOUNTING



SPDT

M7

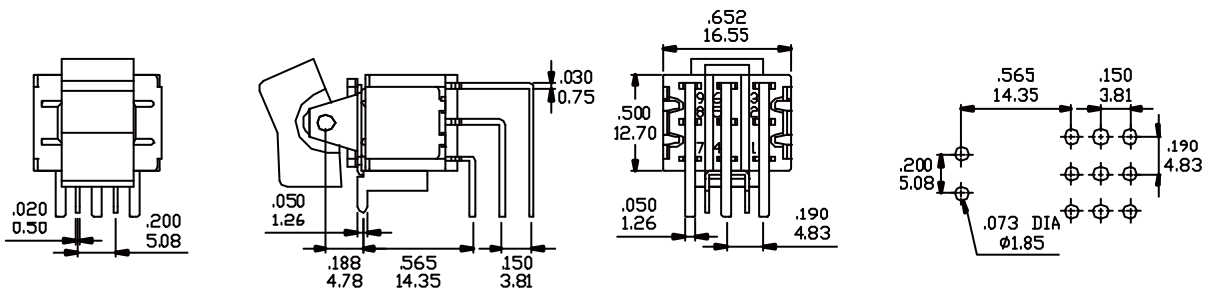
P.C.MOUNTING



DPST

M7

P.C.MOUNTING



3PDT

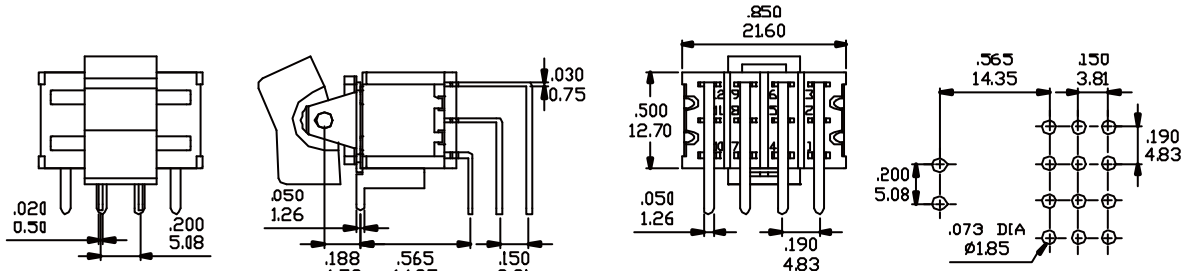
Series 300

Miniature Rocker & Paddle Switches

TERMINATION OPTIONS

M7

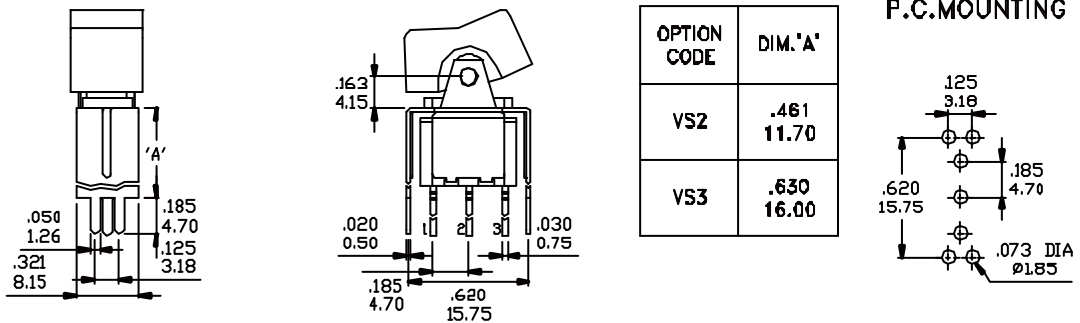
P.C.MOUNTING



4PDT

VS2-VS3

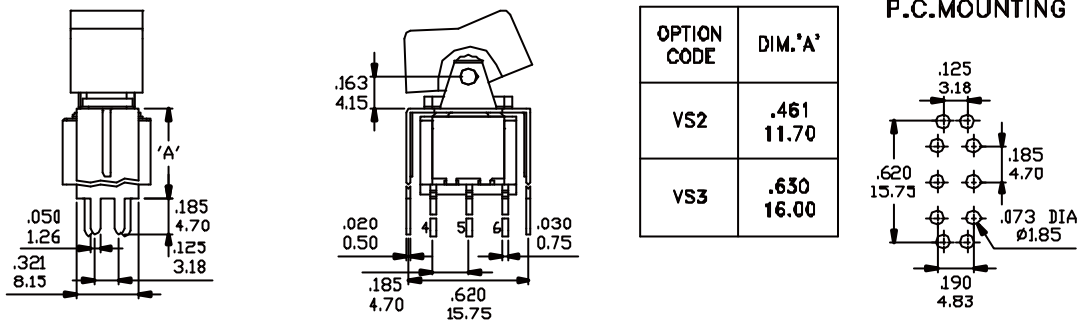
P.C.MOUNTING



SPDT

VS2-VS3

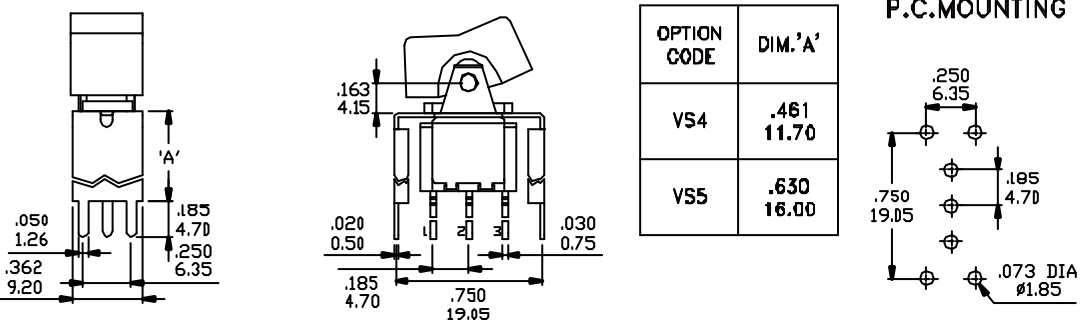
P.C.MOUNTING



DPDT

VS4-VS5

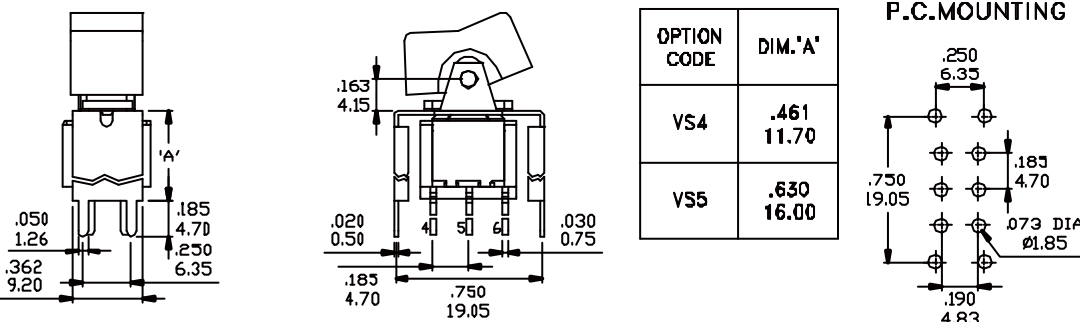
P.C.MOUNTING



SPDT

VS4-VS5

P.C.MOUNTING

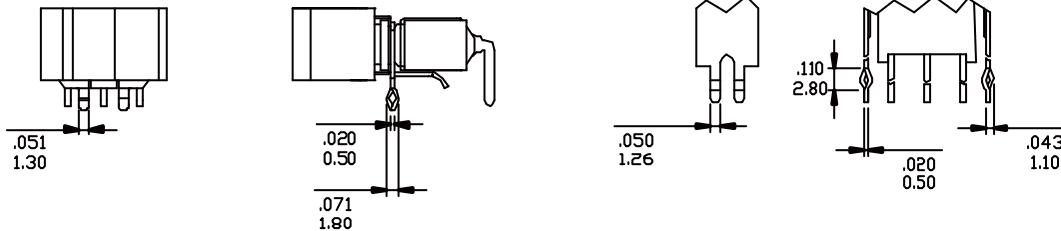


DPDT

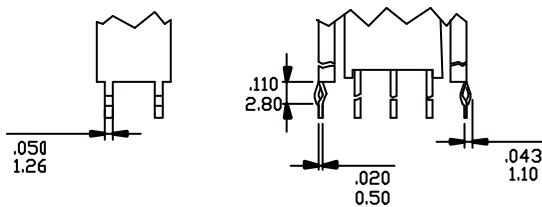
SNAP-IN TERMINATION OPTIONS

M61

VS21,VS31





VS41,VS51



* PC Mounting for M61,VS21,VS31,VS41,VS51 refer to M6,VS2,VS3,VS4,VS5 respectively.

CONTACT MATERIAL OPTIONS

Coding	Contact Material	Terminal Plating	Rating	Agency Approvals
Q	Silver ¹	Silver plated ¹	5Amps @ 125VAC or 28VDC 2Amps @ 250VAC	
P		Tin plated ⁵		
R	Gold ²	Gold plated ⁴	0.4VA max @ 20V max (AC or DC)	
K		Tin plated ⁵		
G	Silver ¹	Gold over ³ silver	5Amps @ 125VAC or 28VDC 2Amps @ 250VAC	

1. Movable Contact / Terminals: Copper alloy, silver plated.
2. Movable Contact: Copper alloy with gold plated over nickel plated.
3. Terminals: Silver plated with outer layer in gold plating.
4. Terminals: Copper alloy, with gold plated over nickel plated.
5. Outer Terminals: Copper alloy with tin over nickel plated.
6. Terminal Contact: Gold plated over nickel plated.
7. Terminal Contact: Palladium nickel alloy plated.

* P, K not available with M1 and M3 terminals.

* 6Amps (Movable Contact: coin silver, silver plated) available to model ON-NONE-ON only and no agency approval when ordered.