



额定电流、电压

6(4)A 250VAC 6A/125A 250VAC
6A 250VAC/10A 125VAC

接触电阻: $\leq 20m\Omega$

绝缘电阻: $\geq 100M\Omega$

介电强度: $\geq 1500VAC/5S$

电气寿命: ≥ 10000 次

Rating:

6(4)A 250VAC 6A/125A 250VAC
6A 250VAC/10A 125VAC

Contact Resistance: $\leq 20m\Omega$

Insulation Resistance: $\geq 100M\Omega$

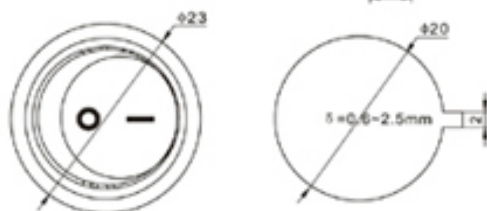
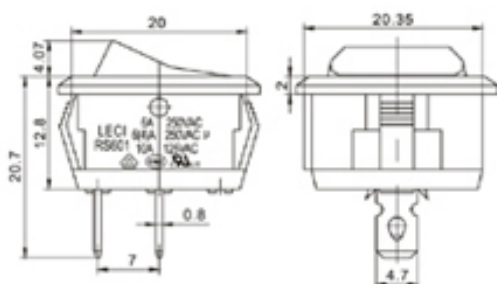
Dielectric intensity: $\geq 1500VAC/5S$

Electrical Life: ≥ 10000 Cycles

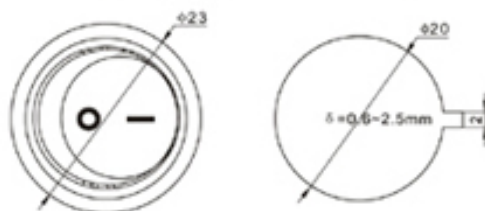
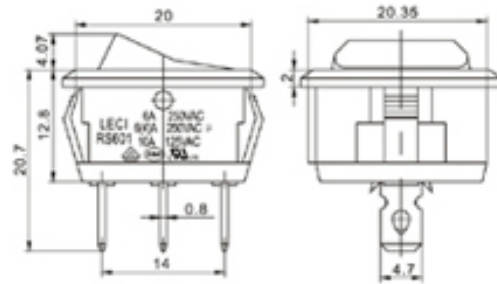
RS601C2	1	01	0	1	1	B	B
系列号 Series	极 Poles	开关功能 Function	带灯状况 Illuminated	开关标志 Marking	端子规格 Terminal Type	按钮颜色 Actuator Colour	底座颜色 Base Colour
1	1 单极 single Pole	01 ON-OFF 02 ON-ON 03 ON-OFF-ON	0 不带灯 NO Illuminated N 220V 氖灯 220V Neon Lamp	0 空白 No Marking 1 2 OFF ON 3 4 5 6	1 0.8×4.7 2 0.8×3.2	B 黑色 Black R 红色 Red W 白色 White	B 黑色 Black W 白色 White G 灰色 Grey



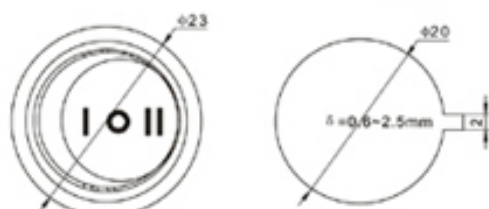
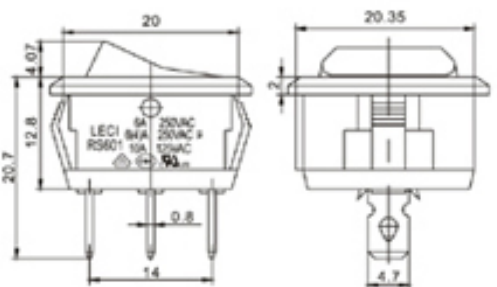
RS601C2-101011BB



RS601C2-102011BB



RS601C2-103011BB



RS601C2-101012BB

