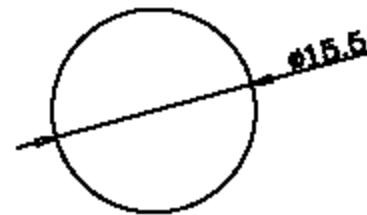


Specifications

- 1.Circuit: A:(ON)-OFF
B:ON-OFF
- 2.Rating: 3A 125VAC
- 3.Contact R.(max): 1A 5VDC 30m
- 4.Insulation R.(min): DC 500V 100M
- 5.Withstand VOL: AC 500V 1Minute
- 6.Operating Force: 250±50g
- 7.Life Cycle(max): 40,000 Cycles



品名	PUSH BUTTON SWITCH	單位	mm	比例	N/A	日期	950928
型號	R-18-40	設計		製圖	Ting	核準	劉R