

Feature :

- DPDT
- Bi-color LED illuminated available
- Lock / non-lock function

Application :

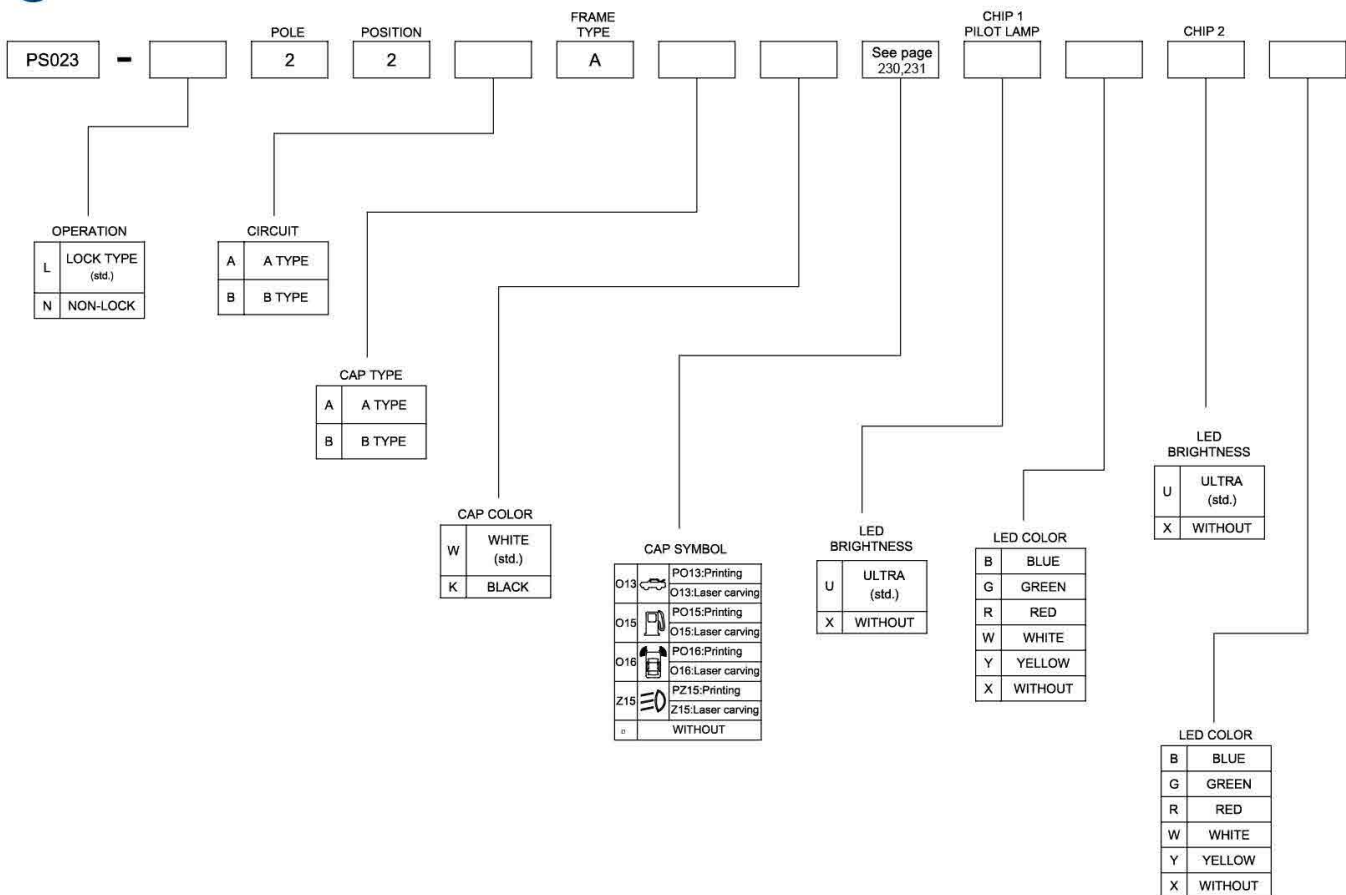
- Consumer products
- Automotive



SWITCH SPECIFICATIONS		LED SPECIFICATIONS								
POLE - POSITION	DPDT	<p>ATTENTION LEDs are Electrostatic Sensitive devices</p> <p>(+) ○ (−)</p>	Value / LED Color							
CONTACT RATING	12V DC , 300 mA		Unit	Blue	Pure Green	Red	Yellow (5mA)	Orange	Green	White
CONTACT RESISTANCE	100 mΩ MAX.	LUMINOUS INTENSITY@20mA I _v	mcd	240	1000	180	24	250	50	400
INSULATION RESISTANCE	100 MΩ MIN. 100 V DC	Dominant Wavelength λ _D	nm	470	525	630	549	601	567	/
DIELECTRIC STRENGTH	Breakdown is not Allowable ; 500 V AC for 1 Minute	FORWARD VOLTAGE@20mA V _f	V	3.3	3.3	1.95	1.8	2.1	2.1	3.3
OPERATING FORCE	300 ± 150gf									
OPERATING LIFE	200,000 cycles									
OPERATING TEMPERATURE RANGE	-20°C ~ 70°C									
STORAGE TEMPERATURE RANGE	-25°C ~ 85°C									
TOTAL TRAVEL	3.6 ± 0.3 mm									

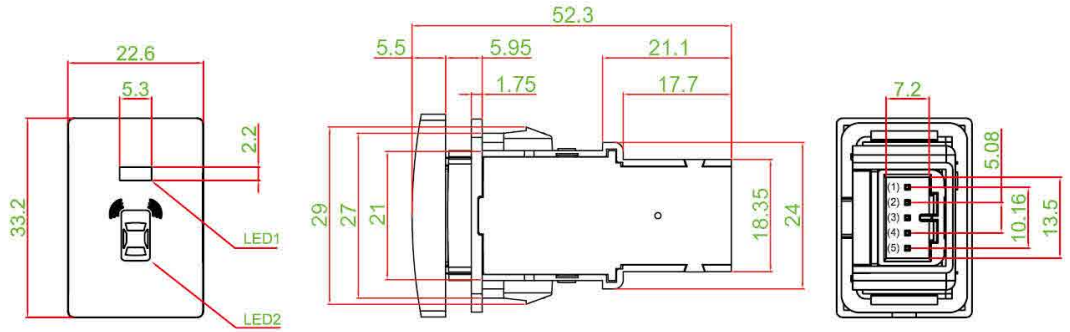
■ A single bin cannot be ordered, please contact us in advance if you need a particular bin sorting before placing your order to clarify the lead time, MOQ and pricing

HOW TO ORDER

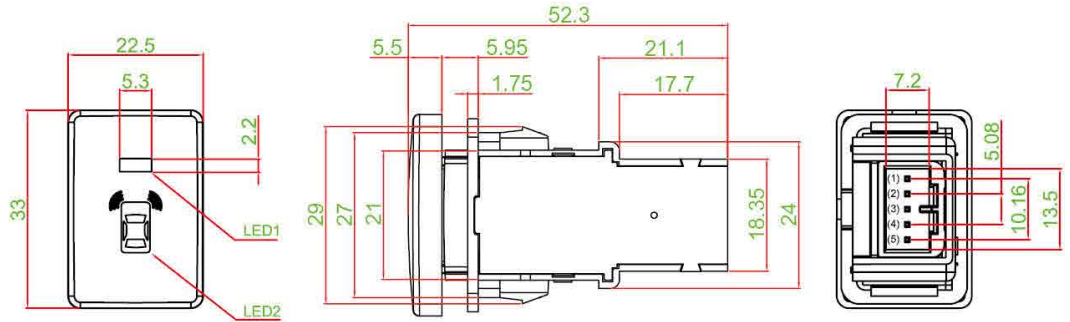


DIMENSION

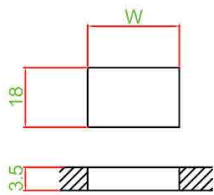
• PS023-L22AAAKO16 □□□□



• PS023-L22BABKO16 □□□□



PANEL CUT OUT



PANEL THICK	W
3.5 ~ 5.0	27.2 ~ 27.3
5.0 ~ 6.0	27.3 ~ 27.4
6.0 ~ 7.0	27.4 ~ 27.5

CIRCUIT

