

## SM Series Switch (Sub-Miniature Snap-Action Switches)

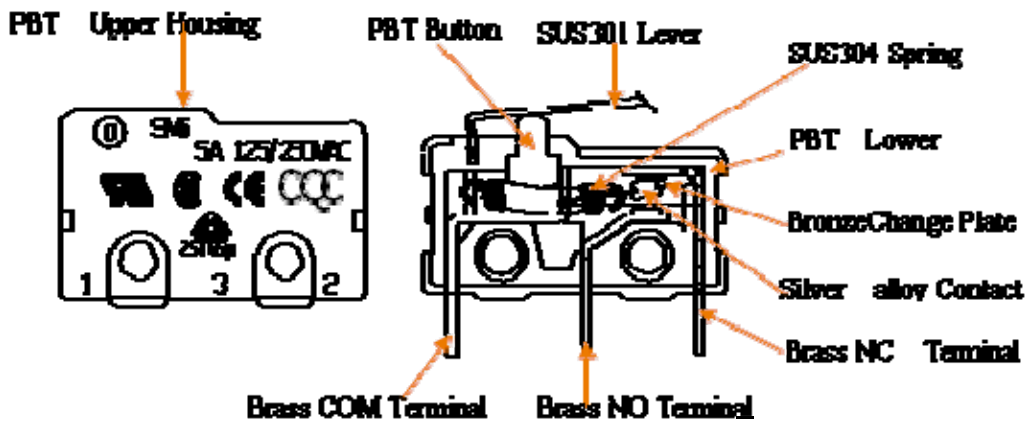


### Features :

Mechanical life : min. 1x10<sup>6</sup> cycles

Good feeling and more actuators and more terminals are applied

### Materials :



Upper Housing : High Temperature PBT(UL94 V-0)

Lower Housing : High Temperature PBT(UL94 V-0)

Actuating Button: High Temperature PBT(UL94 V-0)

Change Plate : Bronze

NC、NO、COM Terminals : Brass(Plating silver)

Contacts : Silver Alloy or plating Gold

Spring : SUS304

Auxiliary Actuator : Stainless Steel

### Specification :

Mechanical life : 1,000,000 cycles min

Contact Rating :

5Amps @ 125 / 250 VAC ; CUL, UL 10,000 cycles ; VDE 10,000 cycles

3Amps @ 125 / 250 VAC ; CUL,UL 10,000 cycles ; VDE10,000 cycles

0.5Amps @ 30 VDC ; CUL,UL 10,000 cycles

Insulation Resistance : > 100MΩ DC500V

Withstand Voltage : AC 1,000V 1 minute

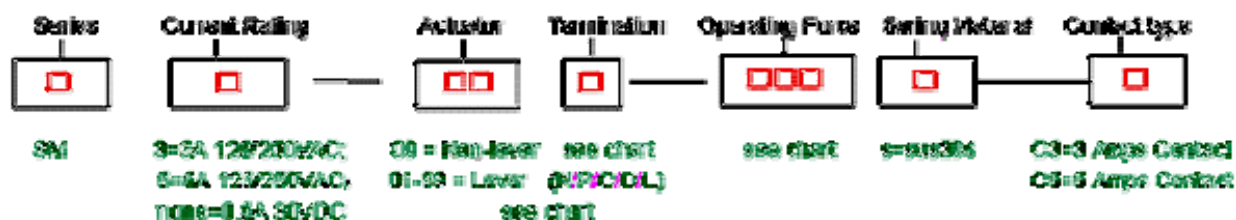
Contact Resistance : < 100mΩ

Operating Temper. : -25°C to 85°C

Operating Force : See Chart

Hand Soldering. : Use a soldering iron of 30 watts , controlled at 380°C approximately 3 seconds while applying solder

### How To Order :



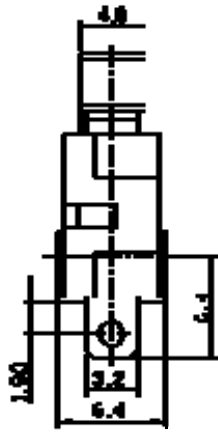
**EXAMPLE:** SM3-00P-175S-C3; SM5-00N-135-C5

### Actuator And Operating Force Chart :

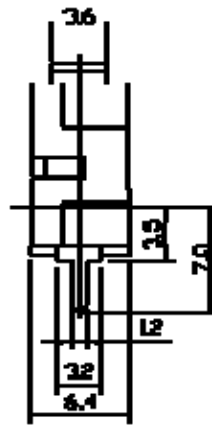
ACTUATOR	OPERATING FORCE(gf)										FP(mm)	OP(mm)	REMARK
	80±25	95±30	115±40	130±40	150±40	175±45	190±45	250±50	295±55				
00 (NO LEVER)											11.9±0.3	11.3±0.3	
01	25±12	30±12	35±20	40±20	45±20	50±25	55±25	70±25	85±30	14.0±0.8	12.0±0.8		
02	20±8	25±12	30±12	35±20	40±20	45±20	50±20	65±25	75±25	14.2±0.8	12.1±0.8		
03	15±6	20±8	25±12	25±12	30±12	35±20	40±20	55±25	60±25	15.0±1.0	12.4±0.8		
04	20±8	25±12	30±12	35±20	40±20	45±20	50±20	65±25	75±25	16.7±0.8	14.5±0.8		
05	20±8	25±12	30±12	35±20	40±20	45±20	50±20	65±25	75±25	19.8±1.0	17.8±1.0		
74	20±8	25±12	30±12	35±20	40±20	45±20	50±20	65±25	75±25	15.0±1.5	13.9±1.5		
75	20±8	25±12	30±12	35±20	40±20	45±20	50±20	65±25	75±25	17.3±1.5	16.0±1.5		
76	20±8	25±12	30±12	35±20	40±20	45±20	50±20	65±25	75±25	15.0±1.0	13.8±1.0		
79	20±8	25±12	30±12	35±20	40±20	45±20	50±20	65±25	75±25	17.9±0.8	15.9±0.8		

Terminal Options mm(Inches) :

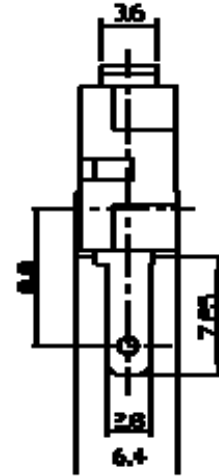
**"N" Type Terminals**



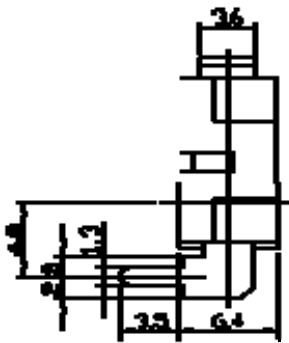
**"P" Type Terminals**



**"L" Type Terminals**



**"C" Type Terminals**



**"D" Type Terminals**

