

PS056 Series SWITCH (Espacial Push Button Switches)



Features :

Mechanical life : min. 1x10 cycles

Good feeling and more actuators

Specification :

Mechanical life : 100,000 cycles min

Contact Rating : 16Amps @ 250 VAC ; CUL, UL50,000 cycles ; VDE 50,000 cycles

Insulation Resistance : > 100MΩ DC250V

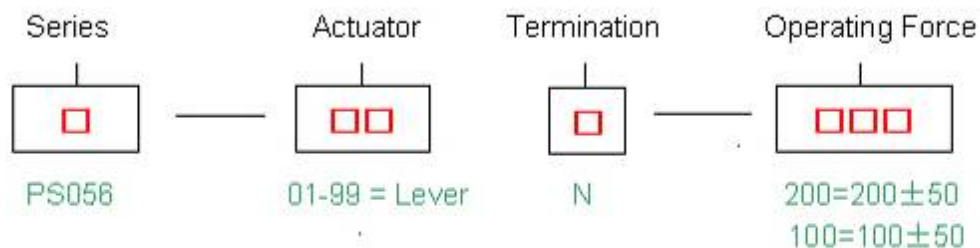
Withstand Voltage : AC250V 1 minute ; Contact Resistance : < 50mΩ

Operating Temper. : -25°C to 140°C ;

Operating Force : 200±50gf / 100±50gf

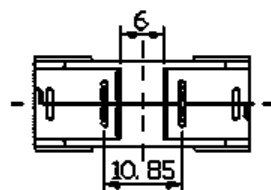
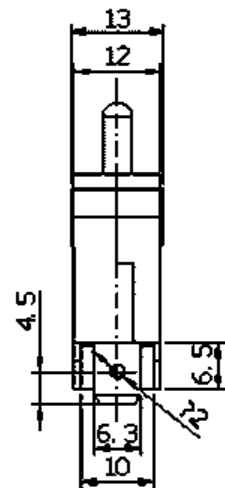
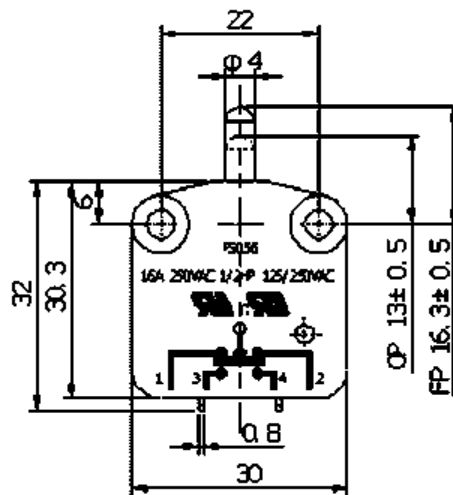
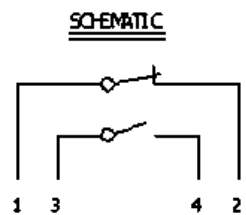
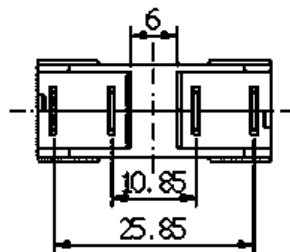
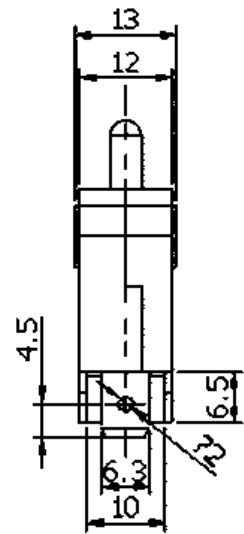
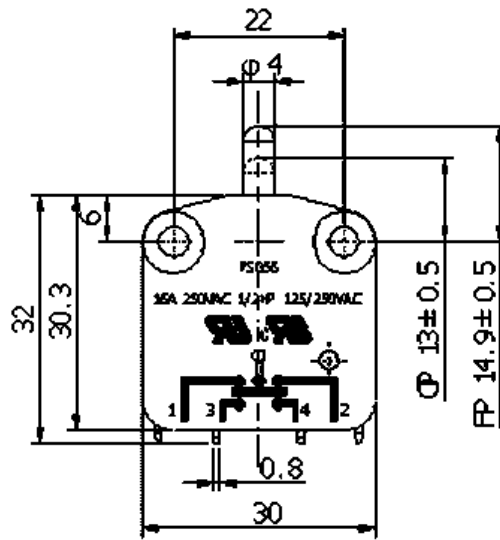
Hand Soldering. : Use a soldering iron of 30 watts , controlled at 380°C approximately 3 seconds while applying solder

How To Order :



EXAMPLE: PS056-01N-200

Dimension Drawing (mm) :



PS056-01N2

