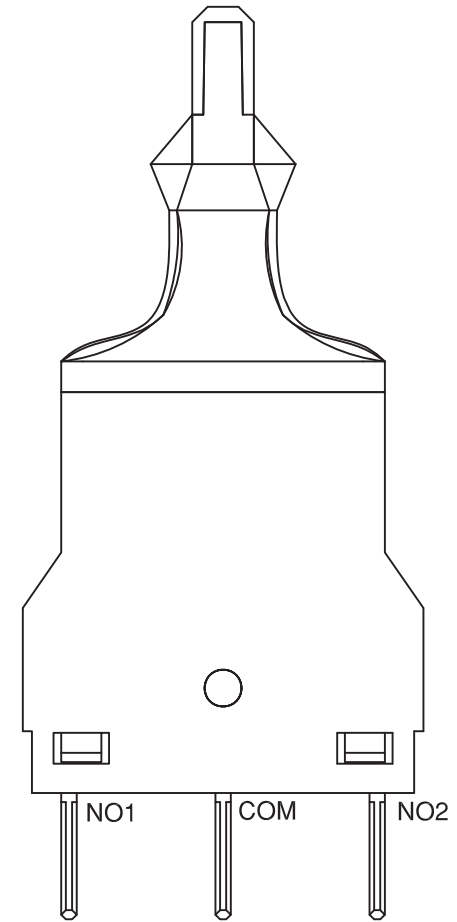
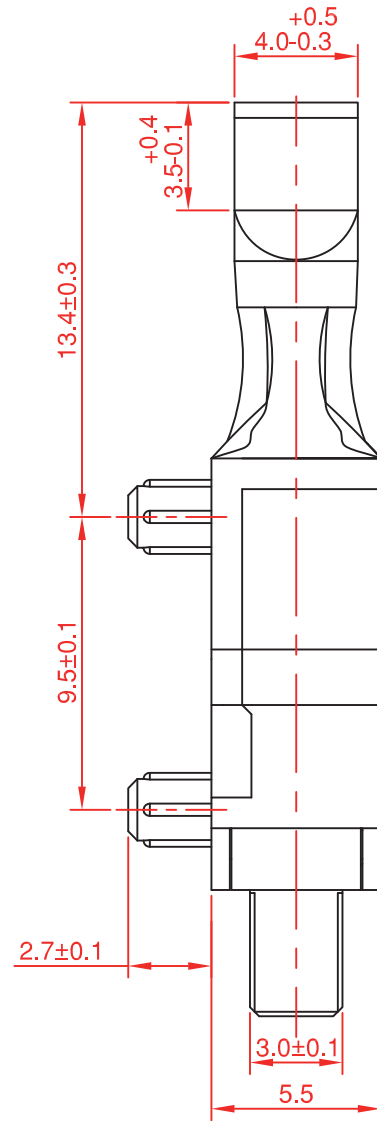
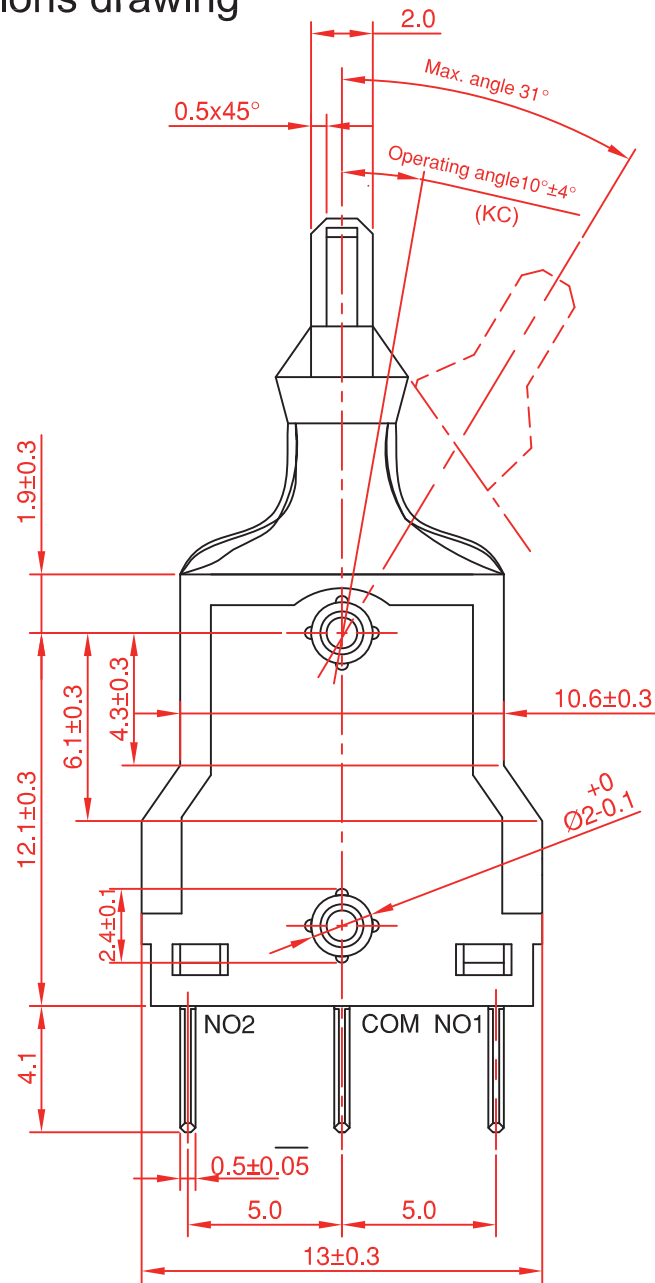


Dimensions drawing



Tolerance	
X.X	±0.2
XX.X	±0.4

VIEW		SIZE	A4	UNIT	mm
DATE	DEC 11, 2008	VER.	1.4	FILE NAME	MP-00A0
APPROVAL	陳立業	CONFIRM	沈俊榮	DESIGN	柯明家



淮洋有限公司 HUI YANG CO.,LTD.

TEL : 886-2-8261-8986 FAX : 886-2-8261-1885

www.hy1688.com.tw 236新北市土城區中央路二段191號10樓之5

APPROVED DATA SHEET

Model: 1001260001(MP-P1L-00A0-Z)

ISSUED DATE: SEP .13.2010

Approved No.: 1001260001.F

PAGE: 1/3

The undersigned guarantees that model of switches is meets the following specifications.

1. Operation Characteristics

Operating Force (OF)	:	Max. 90 gf
Operating Angle	:	10°±4°(KC)
Maximum Angle	:	Max. 31°

2. Specifications

Initial Contact Resistance	:	Max. 500 mΩ . (Measured by ohm meter –Open Voltage<1VDC, Driver current -100mA) Before measure the switch contact resistance, please press the switch three times on and off.
Initial Dielectric Strength	:	1,000VAC(50-60HZ)/minute between Live-parts and dead metal parts.(SC)
Insulation Resistance	:	Min. 100 MΩ (100 VDC/ minute) between Live-parts and dead metal parts.(SC)
Circuit Arrangement	:	SPDT (Single pole double throw)
Rating	:	0.1A 12VDC
Service Life	:	Min. 100,000 cycles for each direct, Total: 200,000 cycles.
Rating Load	:	Resistive Load.
Mechanical Service Life	:	Min. 100,000 cycles for each direct total 200,000 cycles
Operating Frequency	:	30 operations per minute.
Enclosed Protection	:	IP67 (The IP67 protection not include bare terminal of switch).(SC)

