

DS130 Series Micro Switch (Sub-Miniature Snap-Action Switches)



RoHS

Features :

Small dimensions

Mechanical life : min. 1x10 cycles

Good feeling

Specification :

Contact Rating : 0.1A @ 48VDC ; 0.1A@125VAC

Electrical life : 1,000,000 cycles

Mechanical life : 1,000,000 cycles min

Insulation Resistance : > 100M Ω DC250V

Withstand Voltage : AC250V 1 minute

Contact Resistance : < 100m Ω

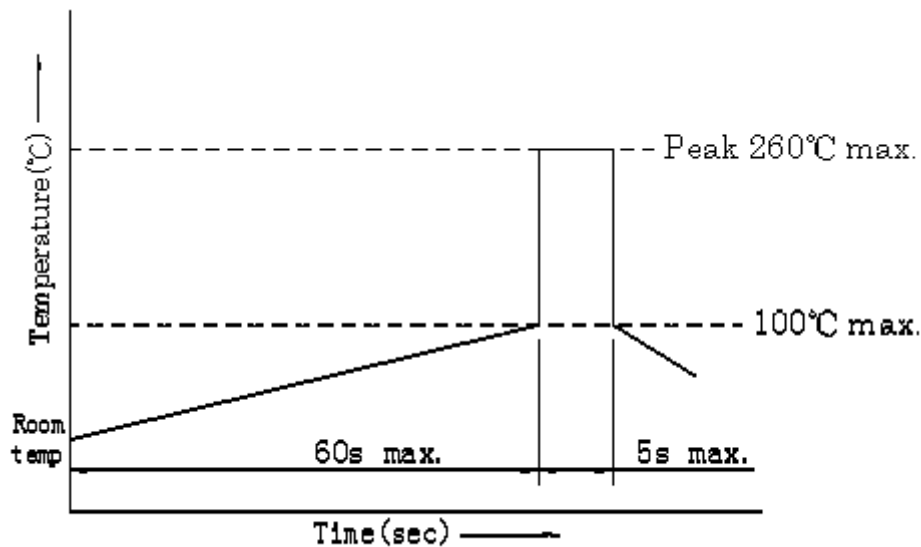
Ambient Temper. : -25 $^{\circ}$ C to 70 $^{\circ}$ C

Operating Force :

Soldering Process : Hand soldering : Use a soldering iron of 30 watts,controlled at 380 $^{\circ}$ C approximately 3 seconds while applying solder

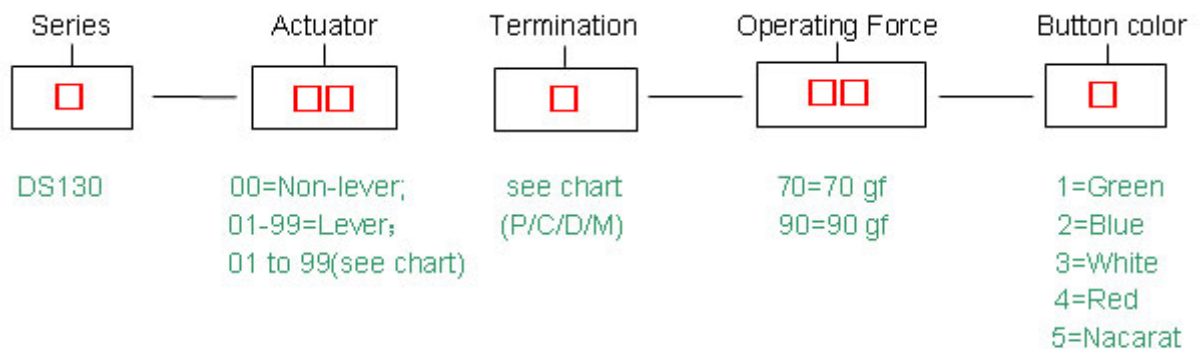
Wave soldering : When applying wave soldering, the peak temperature of the wave Oven should be set to 260 $^{\circ}$ C max. Condition for soldering (Wave & Non-washable Type)

Temperature Profile :



Items	Condition
Preheating temperature	Ambient temperature of the soldered surface of PC board.100°C max.
Preheating time	60s max.
Soldering temperature	260°C max.
Continuous dipping time	5s max.
Number of soldering	2 times max.

How To Order :

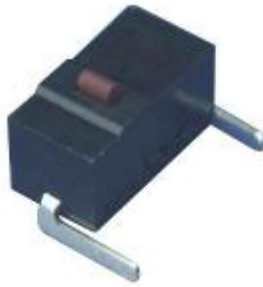


EXAMPLE: DS130-00P-70-4; DS130-00C-70-4; DS130-01P-25-4

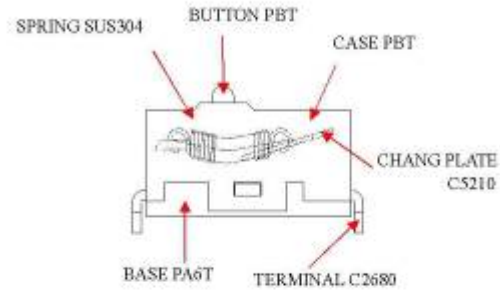
Terminal And Cover Options :

DS130 Series MICRO SWITCH

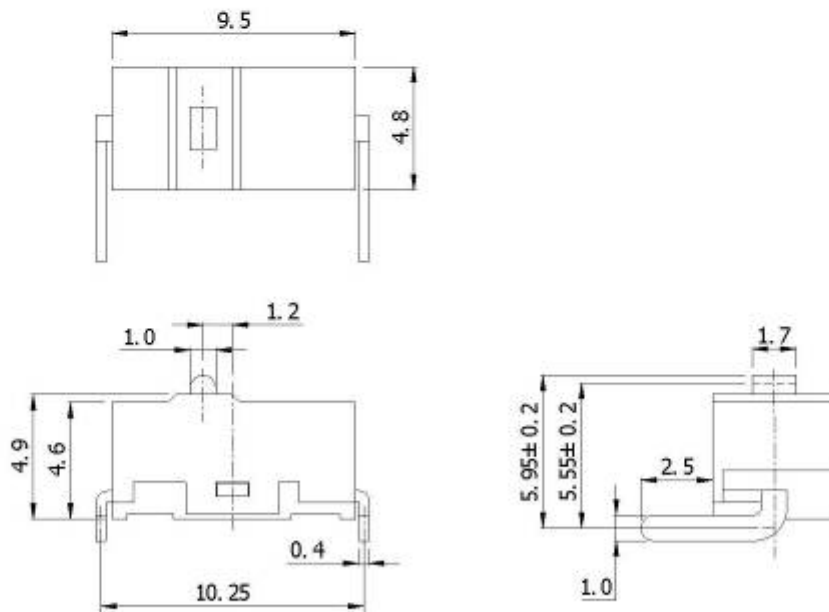
MATERIALS



DS130-00C



DIMENSION DRAWING

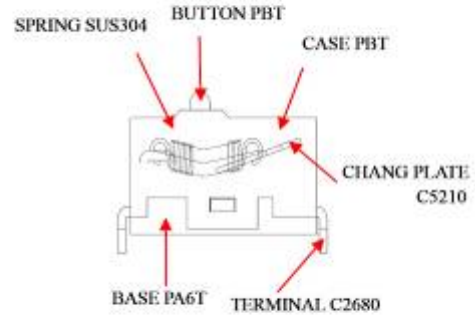


DS130 Series MICRO SWITCH

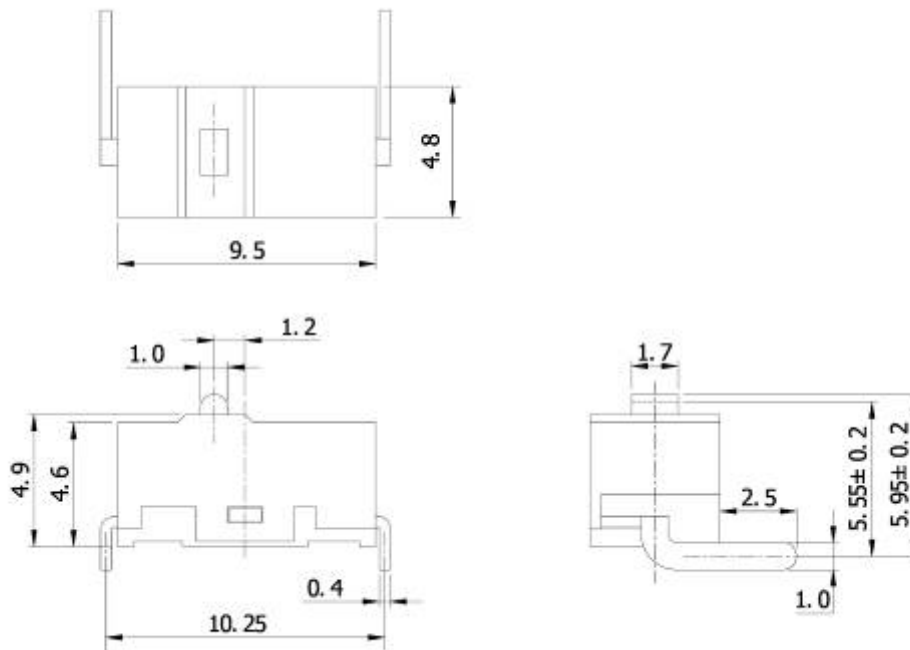
MATERIALS



DS130-00D



DIMENSION DRAWING

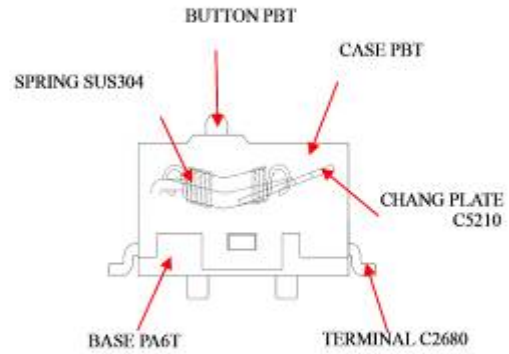


DS130 Series MICRO SWITCH

MATERIALS

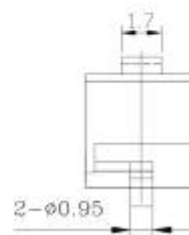
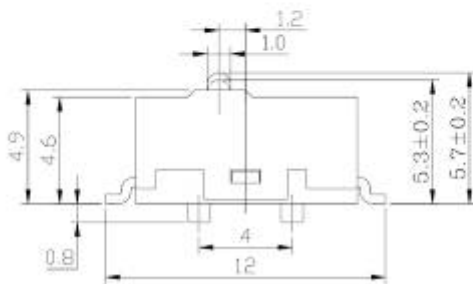
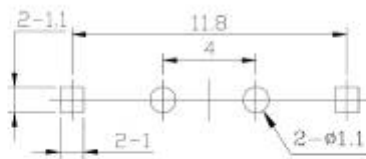
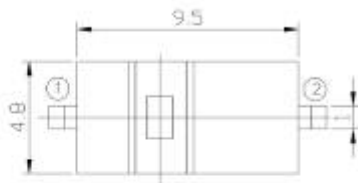


DS130-00M

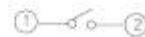


DIMENSION DRAWING

P. C. B LAYOUT



SCHEMATIC

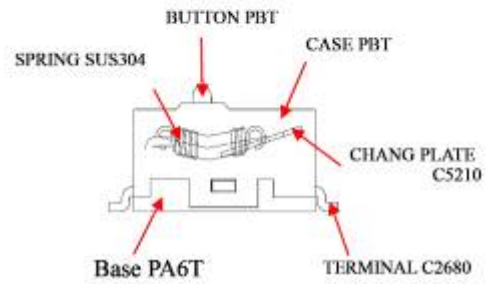


DS130 Series MICRO SWITCH

MATERIALS

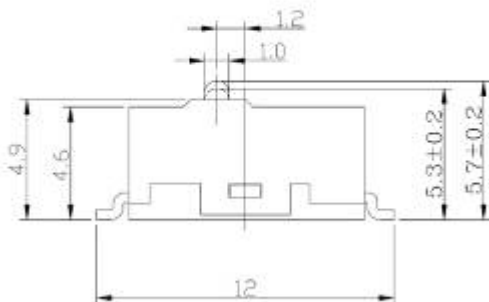
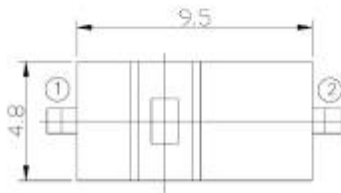


DS130-00MB



DIMENSION DRAWING

P. C. B LAYOUT



SCHEMATIC

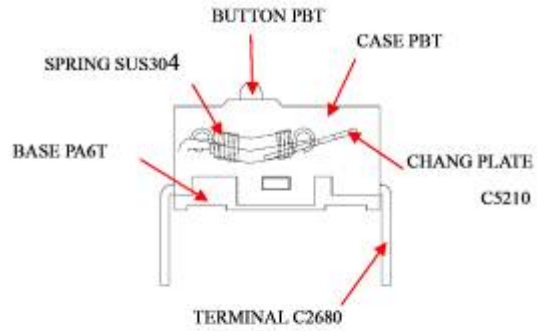


DS130 Series MICRO SWITCH

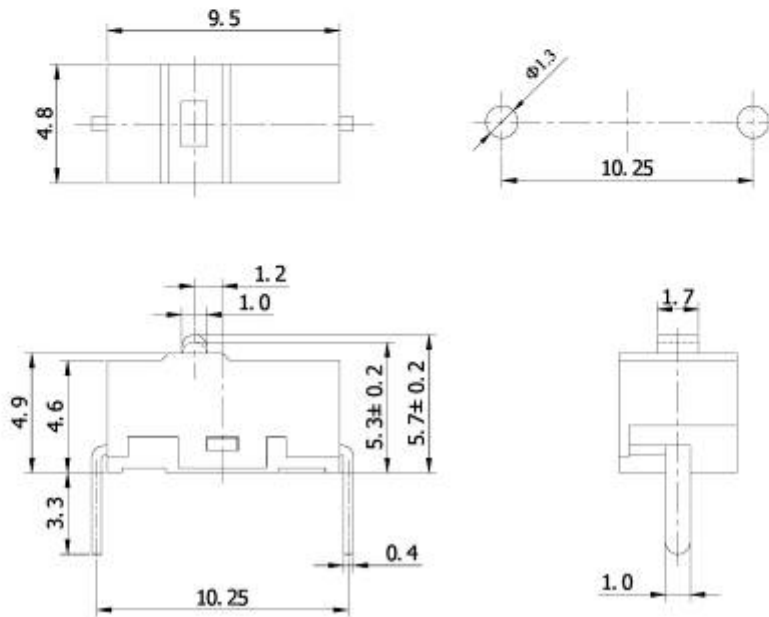
MATERIALS



DS130-00P



DIMENSION DRAWING

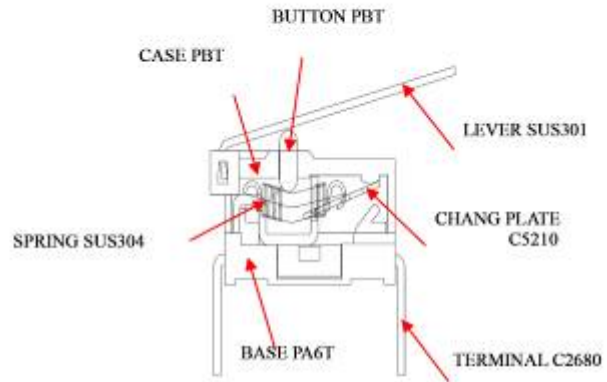


DS130 Series MICRO SWITCH

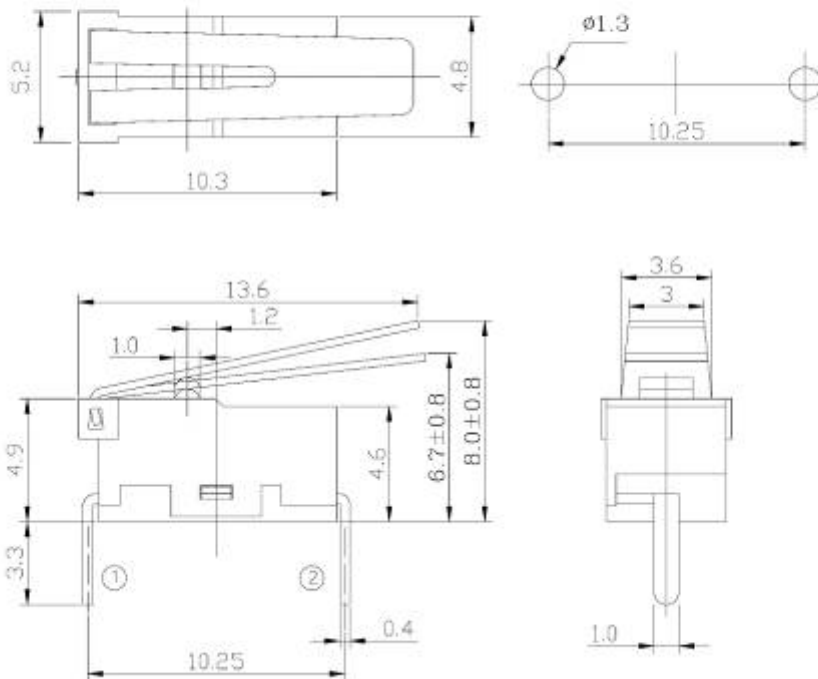
MATERIALS



DS130-01P

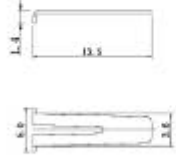
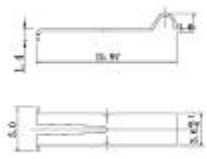
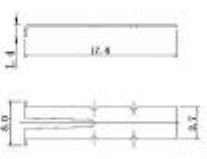

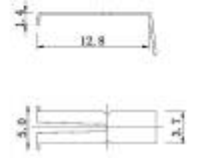
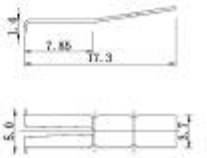
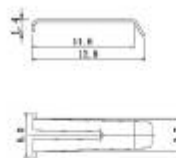
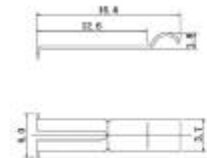
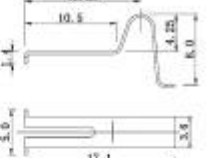
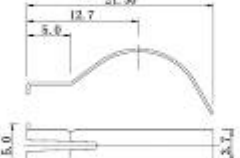




DIMENSION DRAWING



DS130 Series MICRO SWITCH (Sub-Miniature Snap-Action Switches)

ACTUATOR CHART

<p>01</p> 	<p>02</p> 	<p>03</p> 
<p>04</p> 	<p>05</p> 	<p>06</p> 
<p>07</p> 	<p>08</p> 	<p>09</p> 
<p>10</p> 	<p>11</p> 	<p>12</p> 
<p>Remark:1.The thickness of the lever is 0.3mm except that be remarked "t=0.4mm" 2.The shape of the levers can be machined what the customers needed</p>		