

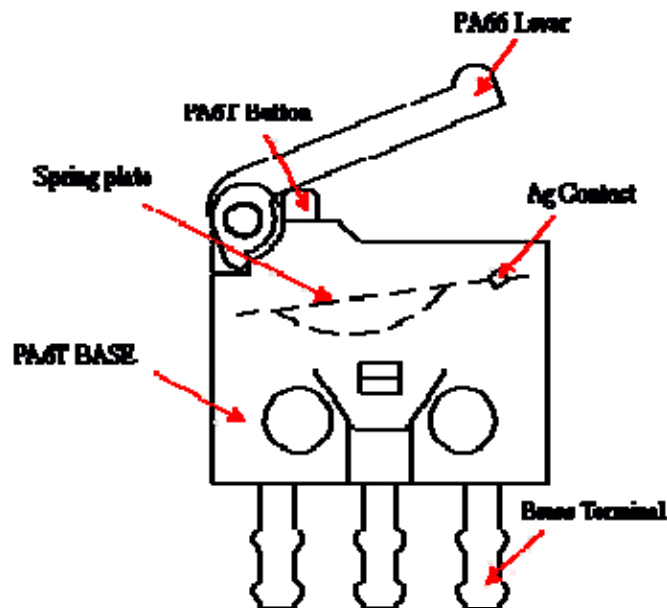
## VM Series Switch (Sub-Miniature Snap-Action Switches)



### Features :

Small dimensions / Mechanical life : min. 1x10 cycles / Good feeling

### Materials :



Switch Lever : NYLON(UL94 V-0)

Switch Cover : NYLON(UL94 V-0) Color : Black

Switch Base : NYLON(UL94 V-0) Color : Black

Actuating Button : NYLON(UL94 V-0) Color : Black

Terminals : Brass(Plating silver)

Contacts : Ag

Spring plate : Be Cu Alloy

**Specification :**

Contact Rating : 0.3A @ DC6V

Electrical life : 50,000 cycles

Mechanical life : 100,000 cycles min

Insulation Resistance : > 100M  $\Omega$  DC100V

Withstand Voltage : AC250V 1 minute

Contact Resistance : < 100m  $\Omega$

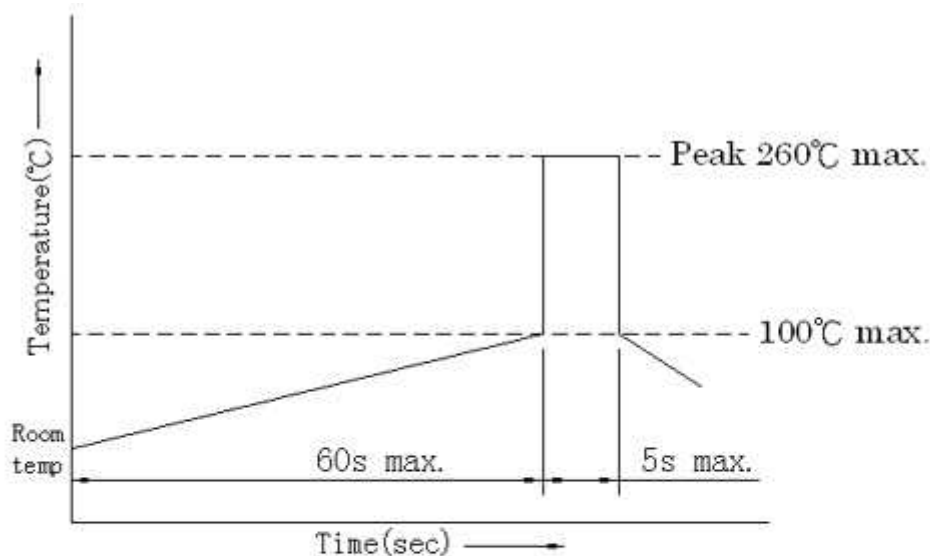
Ambient Temper. : -25  $^{\circ}$ C to 85  $^{\circ}$ C

Operating Force : 10~30 gf

Soldering Process : Hand soldering : Use a soldering iron of 30 watts,controlled at 380 $^{\circ}$ C approximately 3 seconds while applying solder

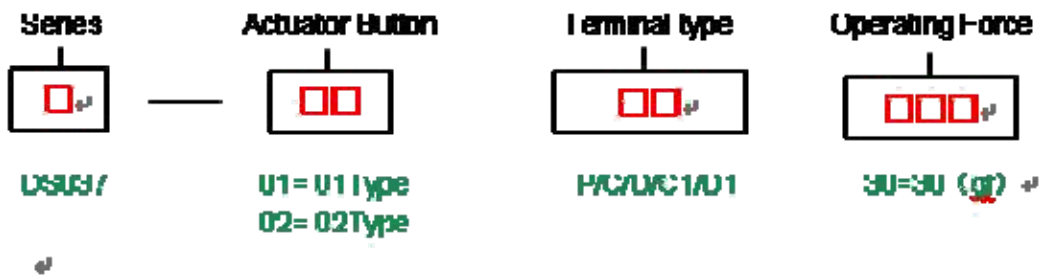
Wave soldering : When applying wave soldering, the peak temperature of the wave Oven should be set to 260  $^{\circ}$ C max. Condition for soldering (Wave & Non-washable Type)

Temperature Profile:



Items	Condition
Preheating temperature	Ambient temperature of the soldered surface of PC board. 100 $^{\circ}$ C max.
Preheating time	60s max.
Soldering temperature	260 $^{\circ}$ C max.
Continuous dipping time	5s max.
Number of soldering	2 times max.

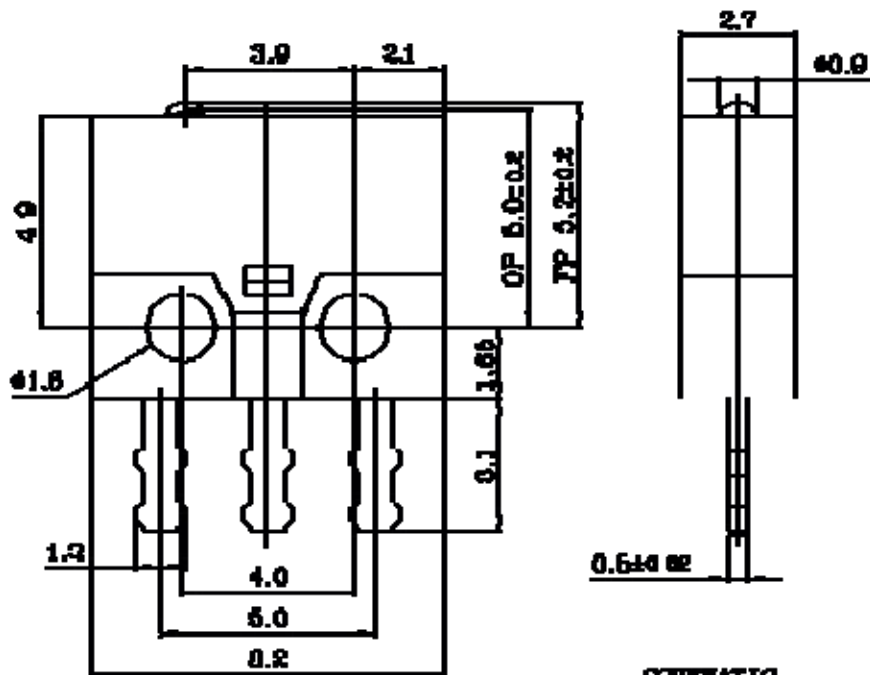
How To Order :



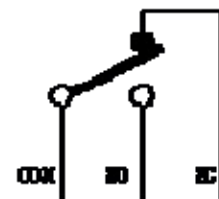
**EXAMPLE:** DS037-01P-30, DS037-01C-30; DS037-02D-30

Terminal Options mm(Inches) :

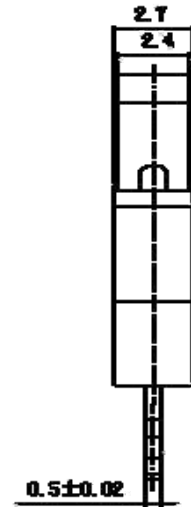
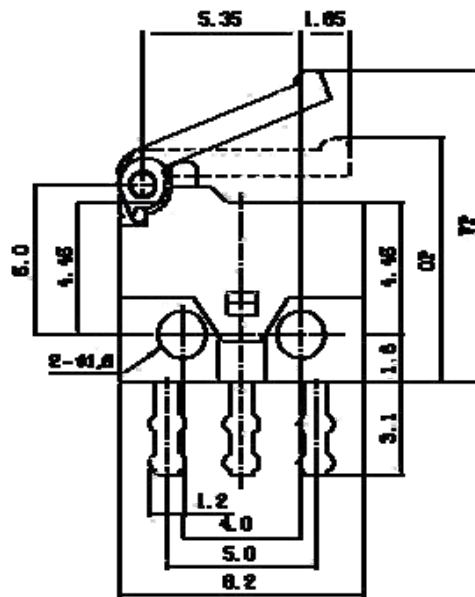
DS037-00P-60



**SCHEMATIC**

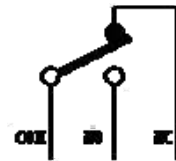


DS037-□P-30

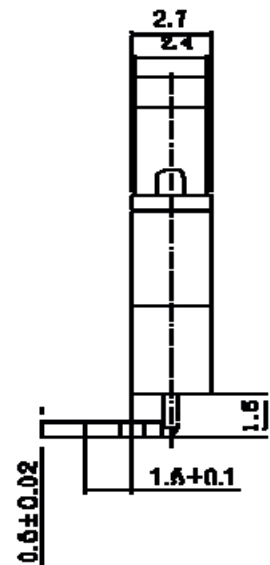
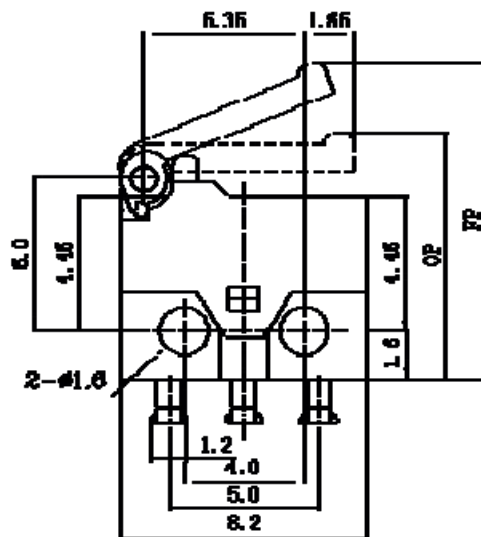


**SCHEMATIC**

MODEL NO.	OP(±%)	FP(mm)	OP(mm)
DS037-01P-30	30±15	9.1±0.5	8.3±0.5
DS037-02P-30			8.6±0.5

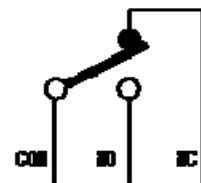


DS037-□C-30

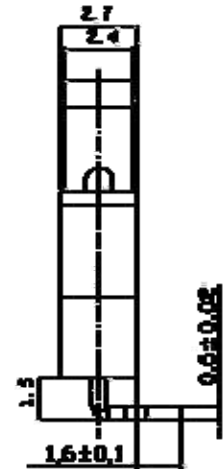
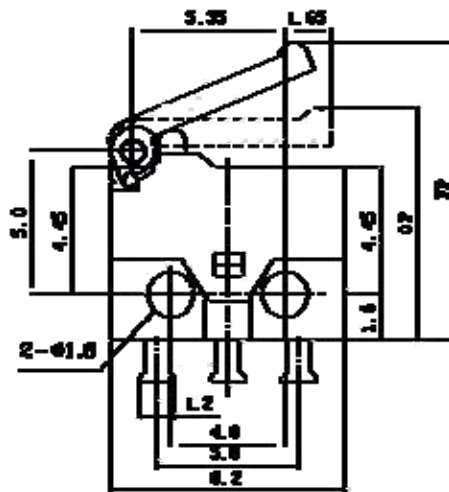


**SCHEMATIC**

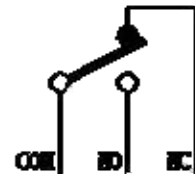
MODEL NO.	OP(±%)	FP(mm)	OP(mm)
DS037-01C-30	30±15	9.1±0.5	8.3±0.5
DS037-02C-30			8.5±0.5



DS037-□D-30

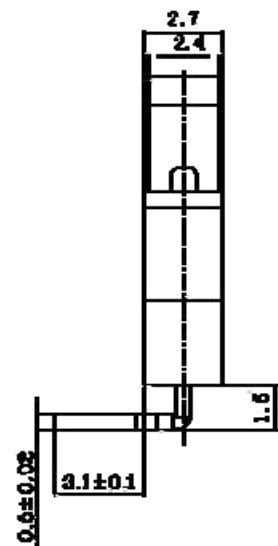
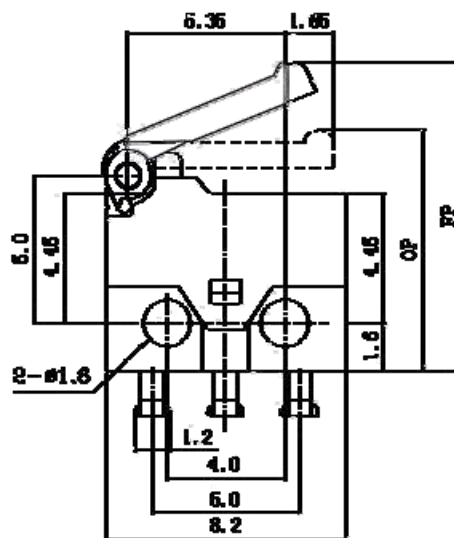


**SCHEMATIC**

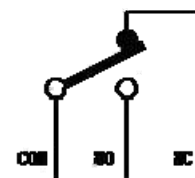


MODEL NO.	OP (g)	FP (mm)	QP (mm)
DS037-01D-30	30 ± 15	9.1 ± 0.5	8.3 ± 0.5
DS037-02D-30			8.5 ± 0.5

DS037-□C1-30

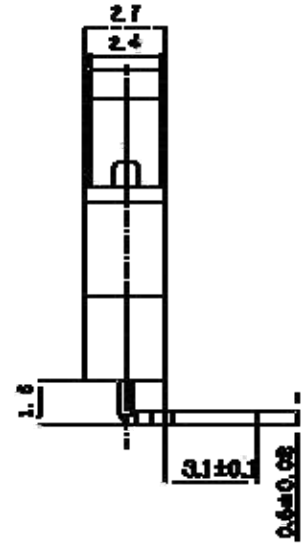
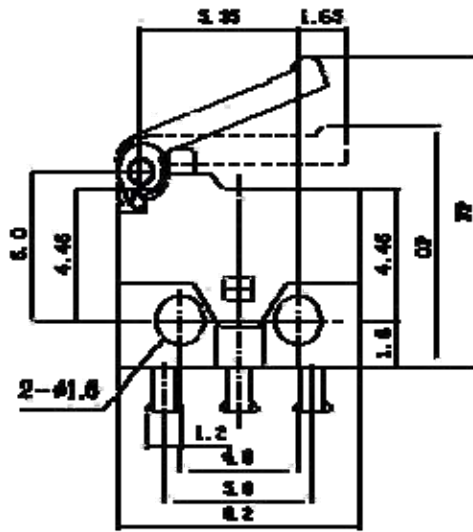


**SCHEMATIC**

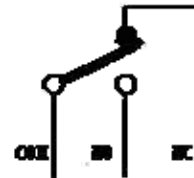


MODEL NO.	OP (g)	FP (mm)	QP (mm)
DS037-01C1-30	30 ± 15	9.1 ± 0.5	8.3 ± 0.5
DS037-02C1-30			8.5 ± 0.5

DS037-□D1-30



**SCHEMATIC**



MODEL NO.	OF (G)	FP (mm)	QP (mm)
DS037-0101-30	30±15	9.1±0.5	8.3±0.5
DS037-0201-30			8.5±0.5