

F

E

D

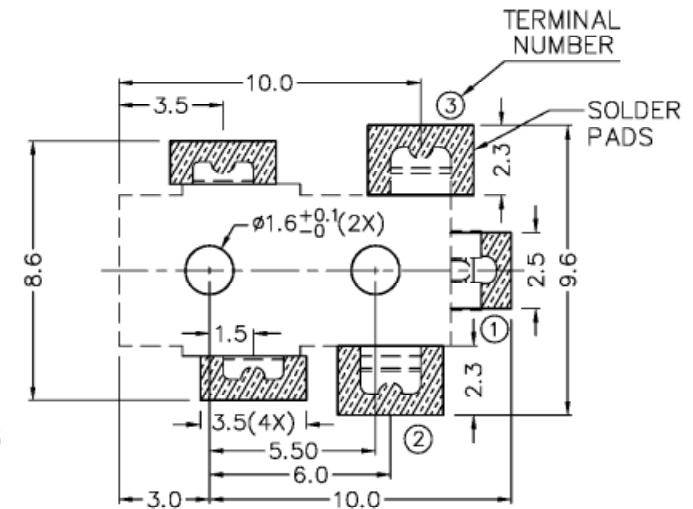
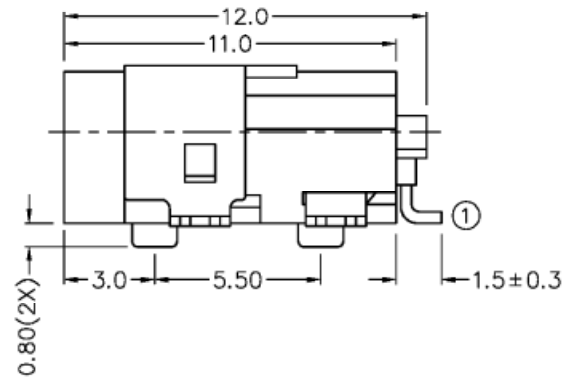
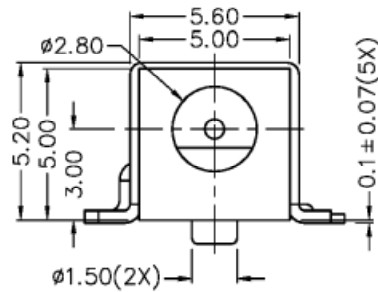
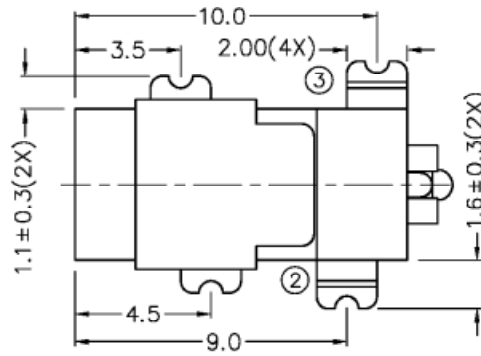
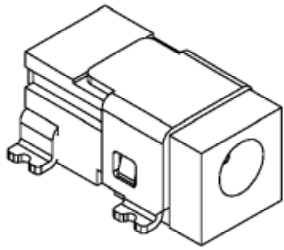
C

B

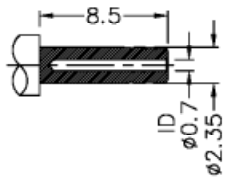
A

ZONE	SYMBOL	REVISION	APPROVAL	DATE
		ADD MATE PLUG	J.X.KUANG	11-7-2006

RoHS  
Compliant



RECOMMENDED  
SOLDER PAD LAYOUT



MODEL NO.	HDC-203H
SCHEMATIC	
CENTER PIN	ø0.65mm

\* MATERIAL

TERMINAL 1 : BRASS  
 TERMINAL 2 : COPPER ALLOY  
 TERMINAL 3 : BRASS  
 SHIELD : COLD ROLLED STEEL  
 HOUSING : PA6T

HUAI YANG CO.,LTD. 淮洋有限公司 TEL:886-2-8261-0858

DESIGN	J.X.KUANG	DATE	10-10-2003	SCALE	4:1
DRAWING	T.Y.LI	DATE	11-7-2006	MATERIAL	*
CHECK		DATE		DWG. NO.	TZ\DC032H-PA6T/B
APPROVAL		DATE		SHEET	

PART NAME	HIGH CURRENT SMD DC POWER SOCKET
PART NO.	HDC-203H

TOLERANCE UNLESS	0.0±0.2
OTHERWISE SPECIFIED:	0.00±0.1 0.000±0.05

UNIT: mm

F

E

D

C

B

A