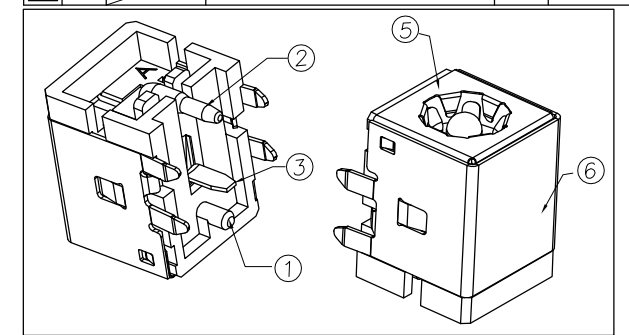
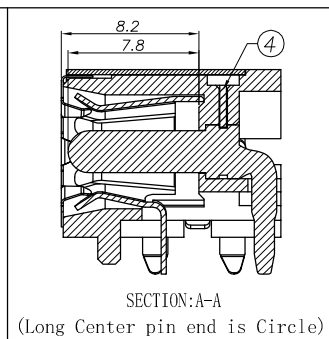
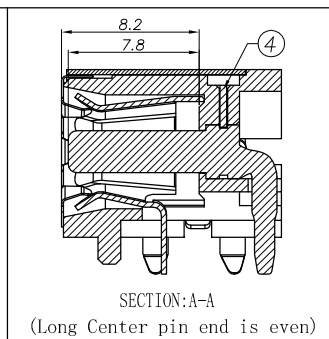
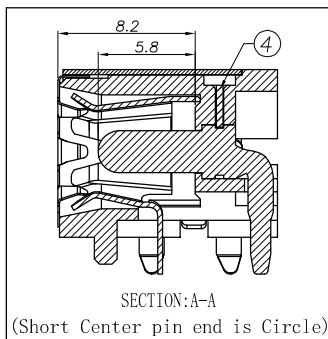
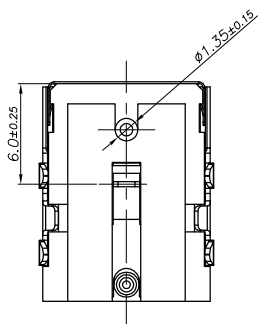


REV.	Q' TY	ECN. NO.	REASON&CONTENTS	SIGN	DATE
			INITIAL	Allen	2011.08.27
△	1		Add Center pin $\varnothing 2.0$	PJ	2012.03.01
△	1		Add Ni PLATING	KINGBO	2012.09.25



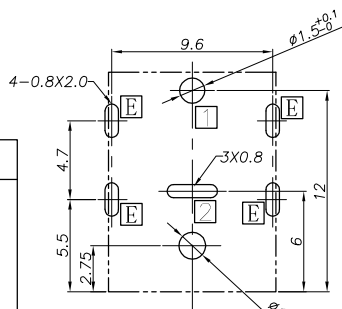
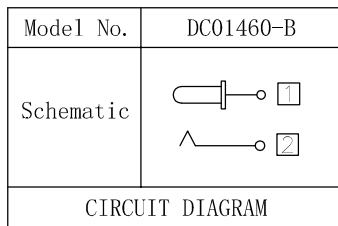
- Specification:
- Rating : DC 20V 4A;
 - Contact resistance: $\leq 30m\Omega$;
After test: $\leq 50m\Omega$
 - Insulation resistance: $\geq 100M\Omega$ (500VDC);
After test: $\geq 50M\Omega$
 - Withstand voltage: 500VAC ;
 - Insertion and extraction force: 3N~30N;
 - life test: 5000cycles MIN. ;
 - Operation temperature range: $-20^{\circ}C \sim 70^{\circ}C$
 - Preservative temperature range: $-40^{\circ}C \sim 85^{\circ}C$



Ordering information:

DC01460 - B 10 T

- (1):Series No.
 (2):Schematic option:B
 (3):Center pin diameter:△
 G= $\varnothing 1.65$, H= $\varnothing 2.0$, J= $\varnothing 2.5$
 (4):Material of housing:
 10=PA10T (Standard)
 (5):Housing color:
 Zero 0A=Black 3C=Orange(157C)
 (6):Terminal plating:
 T=Tin(Sn) S=Silver(Ag)
 (7):Special option:



RECOMMENDED P.C.B. LAYOUT
 UNSPECIFIED TOLERANCE: ± 0.05
 (TOP VIEW)

DESCRIPTION	Code	Specification	Plating
Center pin	1	Long Center pin end is even	Ni plating
	A	Long Center pin end is even	Au plating
	2	Short Center pin end is Circle	Ni plating
	B	Short Center pin end is Circle	Au plating
	0	Long Center pin end is Circle	Ni plating
	G	Long Center pin end is Circle	Au plating

- (8):Packing mode:
 1=Reel packing 3=Plastic box packing
 4=Bag packing

Center pin P/N#: Table 1

Specification	PART NO.
Long Center pin end is even($\varnothing 2.5$)	DC01460-99L
Short Center pin end is Circle($\varnothing 2.0$)	DC01460-99P
Long Center pin end is Circle($\varnothing 2.0$)	DC01460-99H
Short Center pin end is Circle($\varnothing 2.5$)	DC01460-99S
Long Center pin end is Circle($\varnothing 2.5$)	DC01460-99J
Short Center pin end is Circle($\varnothing 1.65$)	DC01460-99T
Long Center pin end is Circle($\varnothing 1.65$)	DC01460-99G

NO.	DESCRIPTION	Q' TY	MATERIAL	PART NO.	REMARK
⑥	Ground Terminal	1	Copper Alloy	DC01460-W1	Tin/Ni plating △
⑤	Shield plate	1	Stainless steel	DC01460-E1	
④	Terminal	1	Copper Alloy	DC01160-04	
③	Tip spring	2	Copper Alloy	DC01460-02	See "Ordering info"
②	Center pin	1	Zn Alloy	See Table 1	See "Ordering info"
①	Housing	1	High temp. Thermoplastic	DC01460-S1	BLACK

UNIT:MM	TOLERANCE		TYPE:	MODEL NO:	DRAWING TYPE:	
	DIMENSIONS	ANGLES	DC POWER Jack	DC01460-B_10_ _ _ _	CUSTOMER DRAWING	
	.X ± 0.50	X $\pm 5^{\circ}$		DRAWING No:	SCALE:	VER. :
	.XX ± 0.30	.X $\pm 3^{\circ}$		BSCR-0000-0061	N/A	02
	.XXX ± 0.15	.XX $\pm 2^{\circ}$			PAGE:	
DESIGNER BY:				1/1		
CHECK BY:				淮洋有限公司 HUAI YANG CO., LTD.		
APPROVED BY:				www.hy1688.com.tw TEL:886-2-82618986		