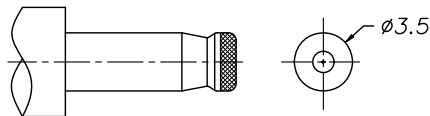
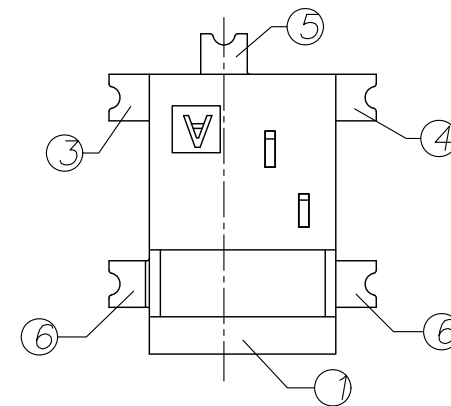
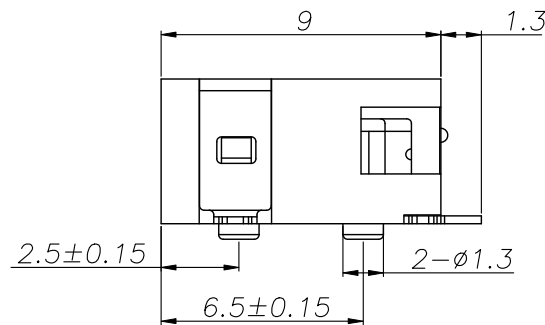
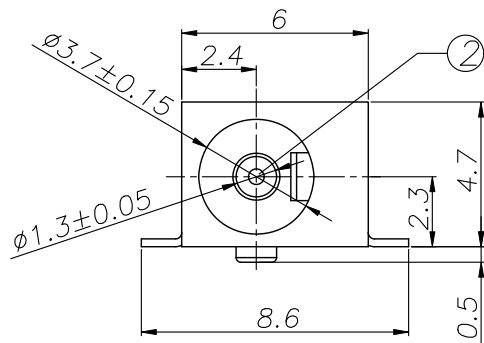
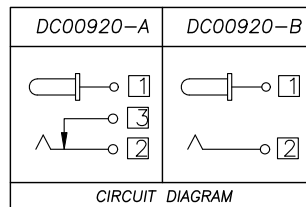


- DC 00920-** □ □ □ □ □ □ □ □ □ □
 (1) (2) (3) (4) (5) (6) (7) (8) (9)
- (1): Series type: DC=DC POWER JACK
 (2): Series No.
 (3): Schematic option:
 A, B
 (4): Center pin diameter:
 E: $\phi 1.3$
 (5): Material of housing:
 9T=PA9T (Standard)
 (6): Housing color:
 0A=Black (Standard)
 (7): Terminal plating:
 S=Silver(Ag)
 (8): Special option:
 0=No special option
 (9): Packing mode:
 1=Reel packing

P. C. B Layout(Copper-sided view)



DC MATE PLUG



□ : TERMINAL NO.

NO.	DESCRIPTION	QTY	MATERIAL	PLATING	
⑥	Frame	④	1	Brass t=0.25	Ag-Plating
⑤	Shunt terminal	③	1	Brass t=0.25	Ag-Plating
④	Tip spring	②	1	Phosphor bronze t=0.3	Ag-Plating
③	Center pin terminal	①	1	Brass t=0.25	Ag-Plating
②	Center pin	①	1	Brass	CuSn-Plating
①	Housing	1	PA9T		

UNIT:MM	TYPE:	MODEL NO:	PAPER NO: A4		PAGE 1 OF 1	
			TOLERANCE	ANGLES	SCALE	VER
	DC POWER JACK	DC00920-_E9T0AS01	±0.3	±2°	FULL	1

DESIGNER BY:	Li Wenhui 2008.12.30	淮洋有限公司 HUAI YANG CO., LTD. www.hy1688.com.tw TEL:886-2-82618986
CHECK BY:		
APPROVED BY:		

- SPECIFICATION**
- Rating \sqcup DC 12V 2A *
 - Contact resistance $\sqcup \leq 30m\Omega$ *
 - Insulation resistance $\sqcup \geq 100M\Omega$ (DC250V) *
 - Withstand voltage \sqcup 500VAC *
 - Insertion and extraction force \sqcup 3-30N;
 - life test \sqcup 5,000 cycles (