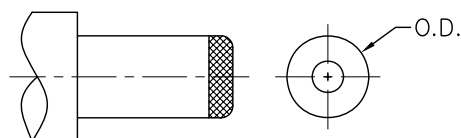
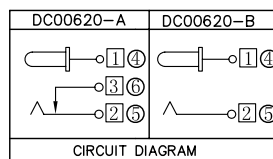


P. C. B Layout
(Copper-sided view)



DC MATE PLUG



□ : TERMINAL NO. ○ : ITEM NO.

| | | | |
|--------------|-------------|-------------|-------------|
| Model No. | DC00620-__H | DC00620-__J | DC00620-__K |
| PIN | φ2.0 | φ2.5 | φ3.0 |
| DC PLUG O.D. | φ5.5 | φ5.5 | φ6.55 |

SPECIFICATION

1. Rating : DC 18V 2.5A;
2. Contact resistance: ≤50mΩ;
3. Insulation resistance: ≥100MΩ (DC250V);
4. Withstand voltage: 500VAC ;
5. Insertion and extraction force: 3-25N;
6. Life test: 5,000 cycles.

| | | | | | |
|---|---------------------|---|---------------|---------------------|------------|
| ⑥ | Shunt terminal | 1 | Brass t=0.5 | DC00620-03(WP-1174) | Sn-Plating |
| ⑤ | Tip spring | 1 | SUS301 t=0.25 | DC00620-02(TP-1175) | Sn-Plating |
| ④ | Center pin terminal | 1 | Brass t=0.5 | DC00620-01(PP-1176) | Sn-Plating |
| ③ | Center pin | 1 | Brass | DC00620-99H/J/K | Ni-Plating |
| ② | Cover | 1 | PBT | DC00620-S2(GZ-1177) | |
| ① | Housing | 1 | PBT | DC00620-S1(ST-1173) | |

| NO. | DESCRIPTION | QTY | MATERIAL | PART NO. | PLATING |
|----------|---------------|------------|----------|--------------|-------------|
| UNIT: MM | TYPE: | MODEL NO: | | PAPER NO: A4 | PAGE 1 OF 1 |
| | DC POWER JACK | DC00620-__ | | TOLERANCE | ANGLES |
| | | | | ±0.3 | ±2' |
| | | | | SCALE | VER |
| | | | | FULL | 2 |

DESIGNER BY: Li Wenhui 2008.3.21
 CHECK BY:
 APPROVED BY:
 淮洋有限公司 HUAI YANG CO., LTD.
 www.hy1688.com.tw TEL:886-2-82610858