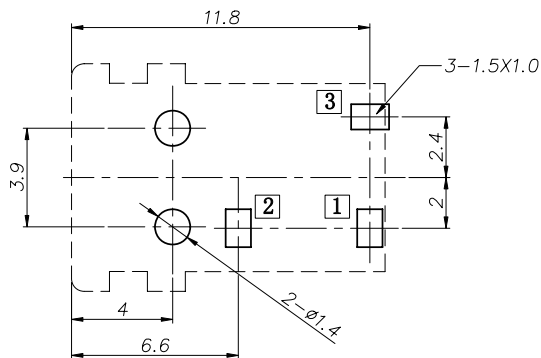


P. C. B Layout (Copper-sided view)



DC 0 0 2 9 0 - □ □ □ □ □ □ □ □

① ② ③ ④ ⑤ ⑥ ⑦ ⑧ ⑨

①:Series type:DC=DC POWER JACK

②:Series No.

③:Schematic option:

A、B

④:Center pin diameter:

C=Ø1.0

⑤:Material of housing:

66=PA66 (Standard)

⑥:Housing color:

0A=Black (Standard)

⑦:Terminal plating:

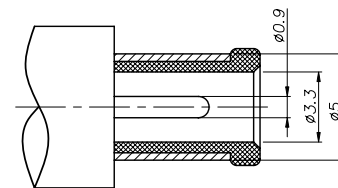
S=Silver(Ag)

⑧:Special option:

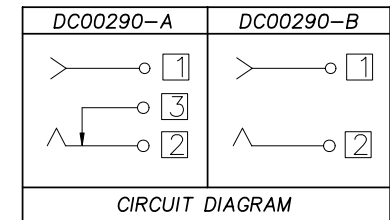
0=No special option

⑨:Packing mode:

4=Bag packing



DC MATE PLUG



□ : TERMINAL NO.

SPECIFICATION

- 1.Rating ㄥDC 20V 4A
- 2.Contact resistance ㄥ≤30m次
- 3.Insulation resistance ㄥ≥100M次 (DC250V)
- 4.Withstand voltage ㄥ500VAC
- 5.Insertion and extraction force ㄥ3-30N;
- 6.life test ㄥ5,000 cycles

④	Shunt terminal	③	1	Brass t=0.3	DC00290-03(WP-DC0008)	Ag-Plating
③	Tip spring	②	1	Bronze t=0.30	DC00290-02(TP-DC0008)	Ag-Plating
②	Center pin	①	1	Bronze t=0.25	DC00290-01(JZ-DC0003)	Ag-Plating
①	Housing		1	PA66	DC00290-S1(ST-DC0010)	

NO.	DESCRIPTION	QTY	MATERIAL	PART NO.	PLATING
-----	-------------	-----	----------	----------	---------

UNIT:MM	TYPE:	MODEL NO:	PAPER NO: A4	PAGE 1 OF 1
	DC POWER JACK	DC00290-_C660AS04	TOLERANCE	ANGLES
			±0.3	±2°
			SCALE	VER
			FULL	4

DESIGNER BY:	Li Wenhui 2008.11.27	淮 洋 有 限 公 司 HUAI YANG CO., LTD.
CHECK BY:		www.hy1688.com.tw TEL:886-2-82618986
APPROVED BY:		