

DC 00280 - □ □ □ □ □ □ □ □

① ② ③ ④ ⑤ ⑥ ⑦ ⑧ ⑨

①: Series type: DC=DC POWER JACK

②: Series No.

③: Schematic option:

A B

④: Center pin diameter:

G=01.65

⑤: Material of housing:

9T=PA9T (Standard)

⑥: Housing color:

0A=Black (Standard)

⑦: Terminal plating:

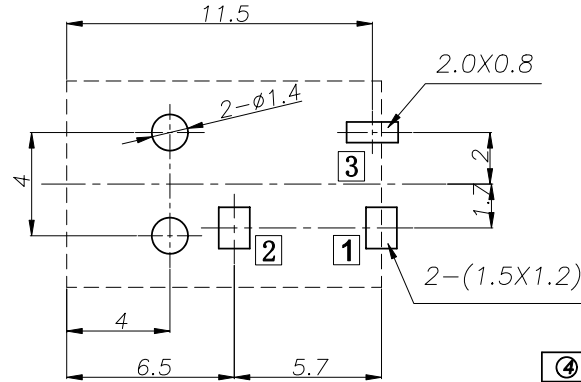
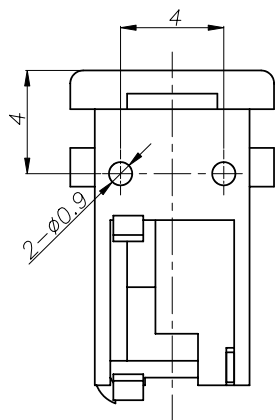
T=Tin(Sn)

⑧: Special option:

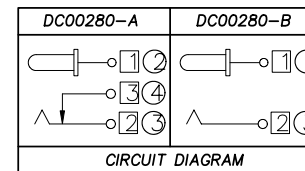
0=No special option

⑨: Packing mode:

4=Bag packing

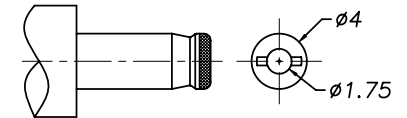


P. C. B Layout (Copper-sided view)



CIRCUIT DIAGRAM

□: TERMINAL NO. ○: ITEM NO.



DC MATE PLUG

SPECIFICATION

1. Rating 1 DC 30V 1A \*
2. Contact resistance  $\mu \leq 30m$ 次 \*
3. Insulation resistance  $\mu \geq 100M$ 次 (DC500V) \*
4. Withstand voltage  $\mu$  500VAC \*
5. Insertion and extraction force  $\mu$  3-30N;
6. life test  $\mu$  5,000 cycles

④	Shunt terminal	1	Brass t=0.3	DC00280-03(WP-DC0003)	Sn-Plating
③	Tip spring	1	Bronze t=0.25	DC00280-02(TP-DC0003)	Sn-Plating
②	Center pin	1	Brass t=0.3	DC00280-99G(JZ-DC0004)	Sn-Plating
①	Housing	1	PA9T UL94V-0	DC00280-S1(ST-DC0005)	

NO.	DESCRIPTION	QTY	MATERIAL	PART NO.	PLATING
-----	-------------	-----	----------	----------	---------

UNIT:MM	TYPE:	MODEL NO:	PAPER NO: A4	PAGE 1 OF 1
	DC POWER JACK	DC00280-_G9T0AT04	TOLERANCE	ANGLES
			±0.3	±2°
			SCALE	VER
			FULL	4

DESIGNER BY:	Li Wenhui 2008.9.10	淮 洋 有 限 公 司 HUAI YANG CO., LTD. www.hy1688.com.tw TEL:886-2-82618986
CHECK BY:		
APPROVED BY:		