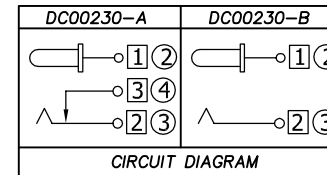
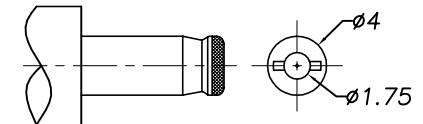


DC 0 0 2 3 0 - ? ? ?? ?? ? ? ?
 ① ② ③ ④ ⑤ ⑥ ⑦ ⑧ ⑨

- ①: Series type: DC=DC POWER JACK
- ②: Series No.
- ③: Schematic option:
A B
- ④: Center pin diameter:
G= 1.65
- ⑤: Material of housing:
PB=PBT (Standard)
- ⑥: Housing color:
0A=Black (Standard)
- ⑦: Terminal plating:
S=Silver(Ag)
- ⑧: Special option:
0=No special option
- ⑨: Packing mode:
4=Bag packing



□: TERMINAL NO. ○: ITEM NO.



DC MATE PLUG

P. C. B Layout(Copper-sided view)

SPECIFICATION

1. Rating : DC 20V 2.5A;
2. Contact resistance: $\leq 30m\Omega$;
3. Insulation resistance: $\geq 100M\Omega$ (DC500V);
4. Withstand voltage: 500VAC ;
5. Insertion and extraction force: 3-30N;
6. life test: 5,000 cycles.

④	Shunt terminal	1	Brass t=0.4	DC00230-03(WP-DC0015)	Ag-Plating
③	Tip spring	1	Bronze t=0.3	DC00230-02(TP-DC0017)	Ag-Plating
②	Center pin	1	Brass	DC00230-99G(PZ-825)	Ag-Plating
①	Housing	1	PBT	DC00230-S1(ST-DC0018)	

NO.	DESCRIPTION	QTY	MATERIAL	PART NO.	PLATING
UNIT: MM		TYPE:		MODEL NO:	PAPER NO: A4
		DC POWER JACK		DC00230-_GPBOAS04	PAGE 1 OF 1
DESIGNER BY:		Li Wenhui 2008.9.10		TOLERANCE	ANGLES
CHECK BY:				±0.3	±2'
APPROVED BY:				SCALE	VER
				FULL	4

淮洋有限公司 HUAI YANG CO., LTD.
 www.hy1688.com.tw TEL:886-2-82618986