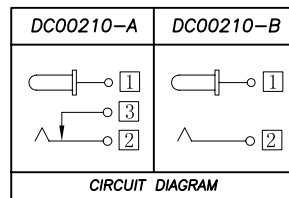
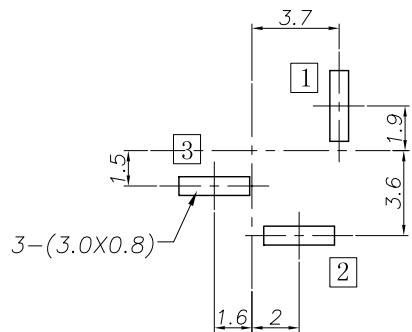


DC 0 0 2 1 0 - □ □ □ □ □ □ □ □ □
 ① ② ③ ④ ⑤ ⑥ ⑦ ⑧ ⑨

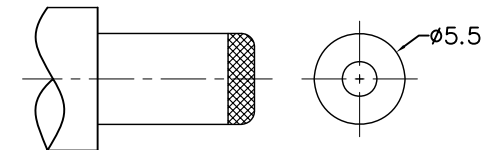
- ①: Series type: DC=DC POWER JACK
- ②: Series No.
- ③: Schematic option:
A、B
- ④: Center pin diameter:
H:ø2.0, I:ø2.35, J:ø2.5
- ⑤: Material of housing:
PB=PBT (Standard)
- ⑥: Housing color:
0A=Black (Standard)
- ⑦: Terminal plating:
T=Tin(Sn)
- ⑧: Special option:
0=No special option
- ⑨: Packing mode:
4=Bag packing

P. C. B Layout (Copper-sided view)



□ : TERMINAL NO.

Model No.	DC00210--H	DC00210--I	DC00210--J
PIN	ø2.0	ø2.35	ø2.5



DC MATE PLUG

⑥	Shunt terminal	③	1	Brass	Sn-Plating
⑤	Tip spring	②	1	SUS301	Sn-Plating
④	Center pin terminal	①	1	Brass	Sn-Plating
③	Center pin	①	1	Brass	Ni-Plating
②	Cover		1	PF	
①	Housing		1	PBT	
NO.	DESCRIPTION	QTY	MATERIAL	PLATING	

UNIT: MM	TYPE:	MODEL NO:	PAPER NO: A4	PAGE 1 OF 1	
	DC POWER JACK	DC00210--_PBOAT04	TOLERANCE	ANGLES	SCALE
			±0.3	±2'	FULL
				VER	2

DESIGNER BY: Li Wenhui 2008.12.11
 CHECK BY:
 APPROVED BY:
 淮洋有限公司 HUAI YANG CO., LTD.
 www.hy1688.com.tw TEL:886-2-82618986

SPECIFICATION

1. Rating : DC 24V 2.5A;
2. Contact resistance: ≤50mΩ;
3. Insulation resistance: ≥100MΩ (DC250V);
4. Withstand voltage: 500VAC ;
5. Insertion and extraction force: 3-30N;
6. Life test: 5,000 cycles.