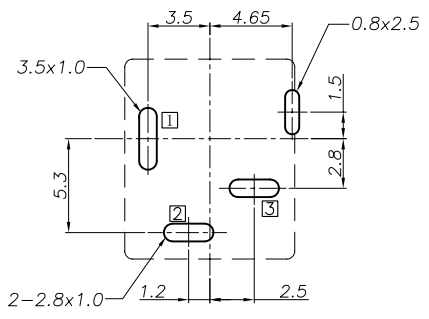
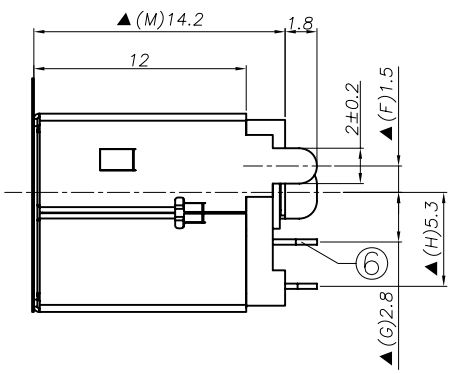
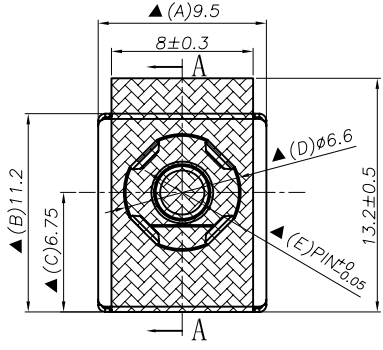
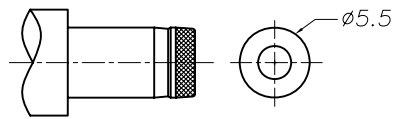
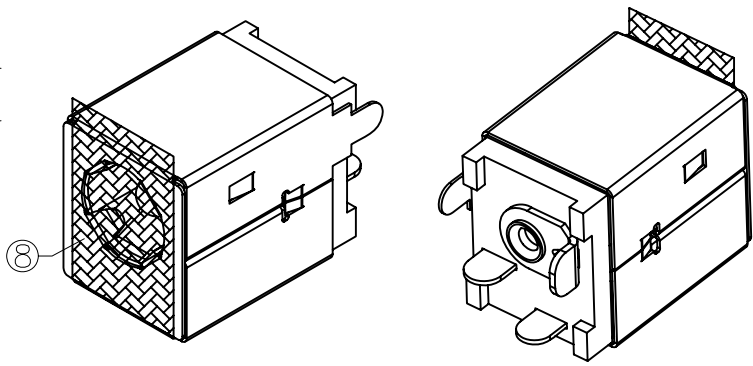
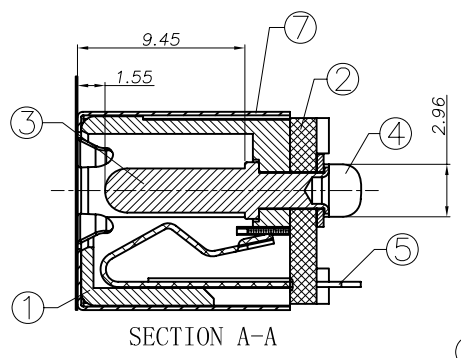
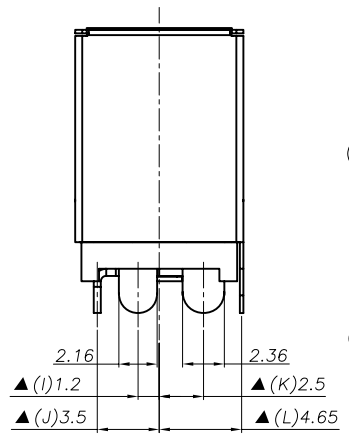


REV. LTR.	DESCRIPTION	SIGN	DATE
	Update drawing	Zhangxiuke	2011.4.8



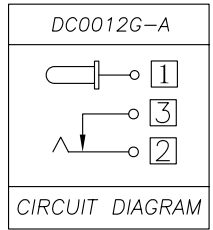
RECOMMENDED P. C. B. LAYOUT
UNSPECIFIED TOLERANCE: ±0.05
(TOP VIEW)



DC MATE PLUG

Ordering information:
DC0012G- A _ 9T 0A S 0 1
 (1) (2) (3) (4) (5) (6) (7) (8)
 (1): Series No.
 (2): Schematic option: A
 (3): Center pin diameter:
 G=ø1.65, H=ø2.0, J=ø2.5
 (4): Material of housing:
 9T=PA9T(Default)
 (5): Housing color:
 Zero → 0A=Black
 (6): Terminal plating:
 S=Silver(Ag)
 (7): Special option:
 0=No special option
 (8): Packing mode:
 1=Reel packing

Model No.	DC0012G-AG	DC0012G-AH	DC0012G-AJ
PIN	ø1.65	ø2.0	ø2.5



□ : TERMINAL NO.

⑧	Mylar	1	Polyimide		Yellow
⑦	Shell	1	Stainless stell t0.2	DC0012G-W1	Nickel plating
⑥	Shunt terminal	③	Brass t0.3	DC0012G-03	Silver plating
⑤	Tip spring	②	Phosphor bronze t0.3	DC0012G-02	Silver plating
④	Center pin terminal	①	Brass t0.4	DC0012G-01	Silver plating
③	Center pin	①	Brass	DC00050-99G/H/J	Nickel plating
②	Cover	1	PA9T,UL94V-0	DC0012D-S2	Black
①	Housing	1	PA9T,UL94V-0	DC0012G-S1	Black

NO.	DESCRIPTION	QTY	MATERIAL	PART NO.	REMARK
UNIT: MM		TYPE:		MODEL NO:	
		DC POWER JACK		DC0012G-A_9TOAS01	
DESIGNER BY:		PAPER NO: A4		PAGE 1 OF 1	
CHECK BY:		TOLERANCE		ANGLES	
APPROVED BY:		±0.3		±2'	
		SCALE		FULL	
		VER		03	

Specification:
 1. Rating : DC 20V 7A.
 2. Contact resistance: ≤30mΩ.
 After test: ≤50mΩ.
 3. Insulation resistance: ≥100MΩ (500VDC).
 After test: ≥50MΩ.
 4. Withstanding voltage: 500VAC.
 5. Insertion and extraction force: 3N~30N.
 6. life test: 5000cycles min.
 7. Operation temperature range: -20℃~70℃.
 8. Preservative temperature range: -40℃~85℃.
 9. Sign"▲" is importance dimension.

淮洋有限公司 HUAI YANG CO., LTD.
 www.hy1688.com.tw TEL:886-2-82618986