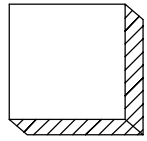
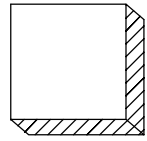


# Order Guide:

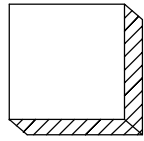
# 91-



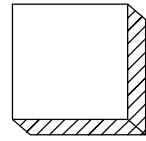
Type of Button  
推桿長度



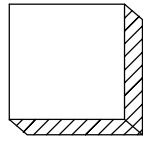
Fitting Plate  
固定方式



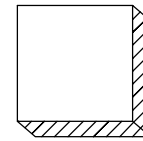
Color of Button  
推桿顏色



Rating Amp



Terminal Type



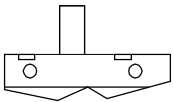
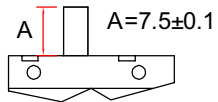
Terminal Finish

0= Plate with Tin  
N= Plate with Nickel

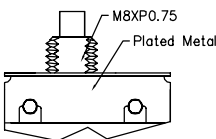
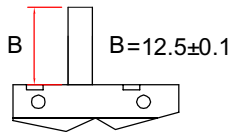
## Standard Rating:

- 0.6A 3.5A
- 0.8A 3.75A
- 1.0A 4.0A
- 1.25A 4.5A
- 1.5A 5.0A
- 1.6A 5.5A
- 1.75A 6.0A
- 2.0A 6.3A
- 2.25A 6.5A
- 2.5A 7.0A
- 2.75A 7.5A
- 3.0A 8.0A
- 3.15A 9.0A
- 3.3A 10.0A

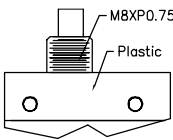
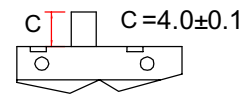
- R=Red(紅)
- B=Black(黑)
- Y=Yellow(黃)
- G=Bule(藍)



**N** (無固定架)



**M** (金屬固定架)



**P** (塑膠固定架)

0	B	2	L

NO	DESCRIPTION	APPROVED	DATE	TOLERANCE		APPROVED	CHECK	DESING	DRAWER	UNIT	mm	
				DIMENSION	TOLERANCE							
4				XX.XX	±0.05	Hunter.H	Mark.C	John.L	Cewen.O	SCALE	1:1	
3				XX.X	±0.1					MATERIAL	Guide	
2				XX	±0.15	FILE NO	91 Series					
1				ANGLE	TOLERANCE	REV	C1	DATE	20070716	TITLE	91 Series Thermal Circuit Breaker	
				X	±1°	HUAI YANG CO., LTD.				DRAWING NO	07071603	
				X.X	±0.5°							